

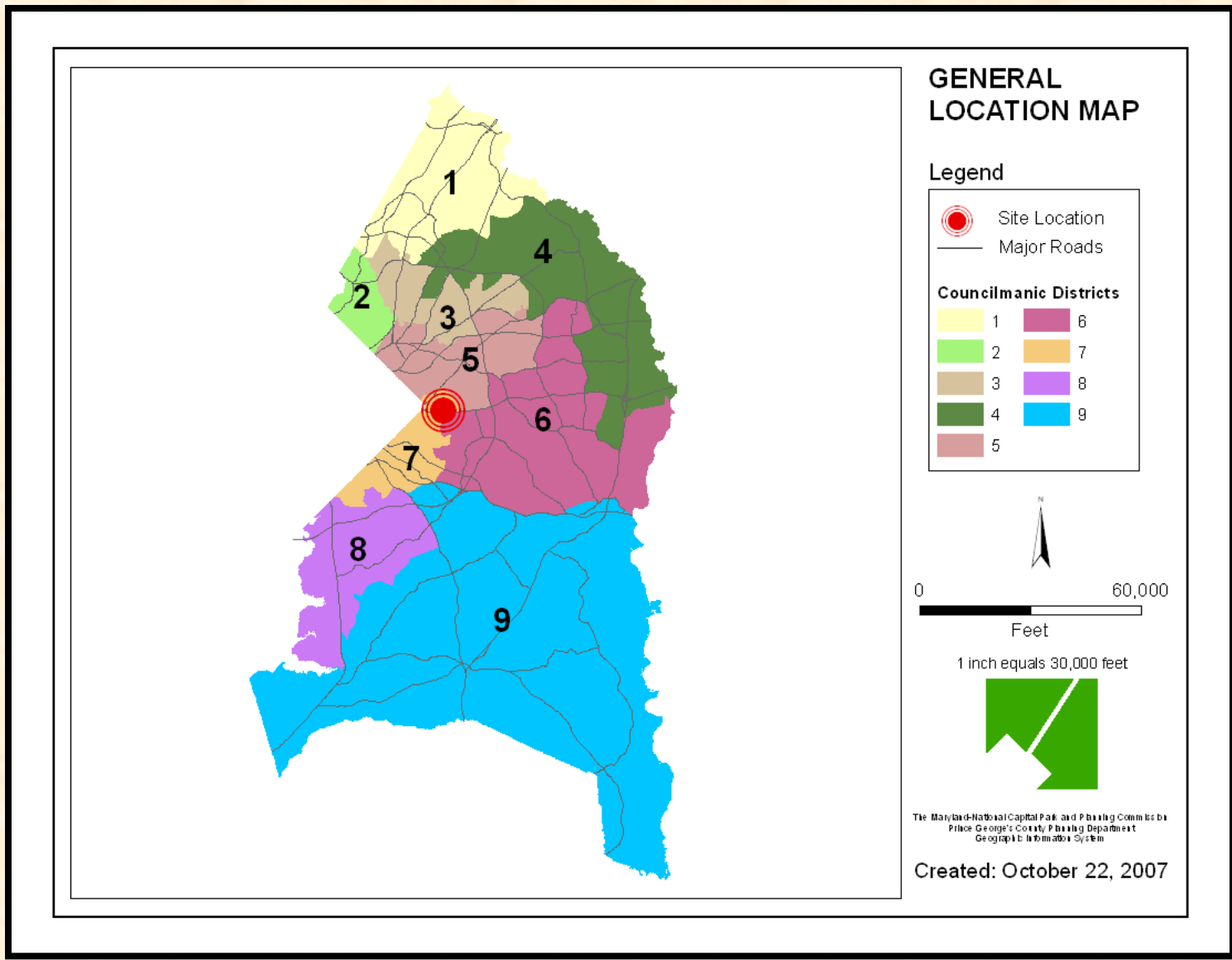
ITEM # :

CASE NO: DSP-07061

VILLAGES AT PEPPERMILL



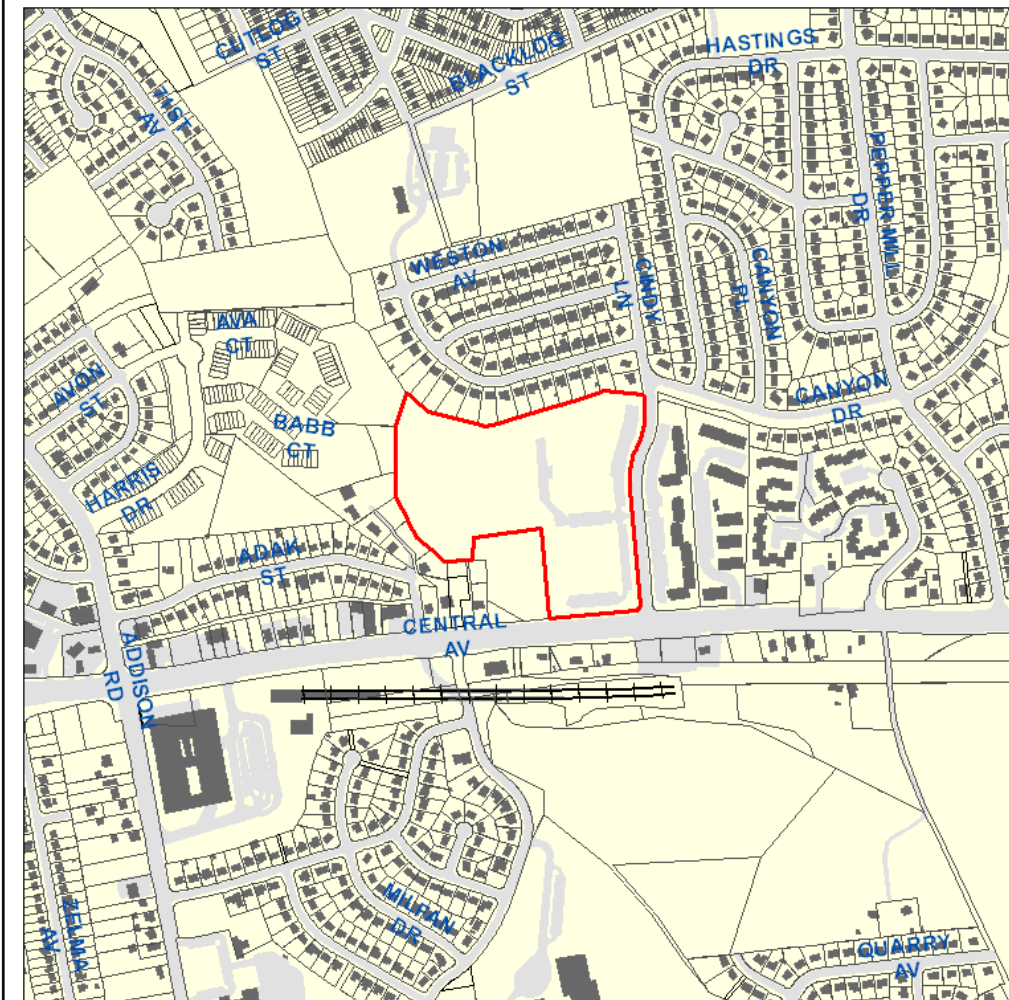
GENERAL LOCATION MAP



ITEM






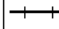
DSP-07061

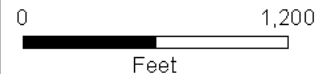
SITE VICINITY MAP



SITE VICINITY MAP

Legend

-  Site Boundary
-  Property
-  Building
-  Bridge
-  Pavement
-  Railroad Line



1 inch equals 600 feet



The Maryland-National Capital Park and Planning Commission
Prince George's County Parking Department
Geographic Information System

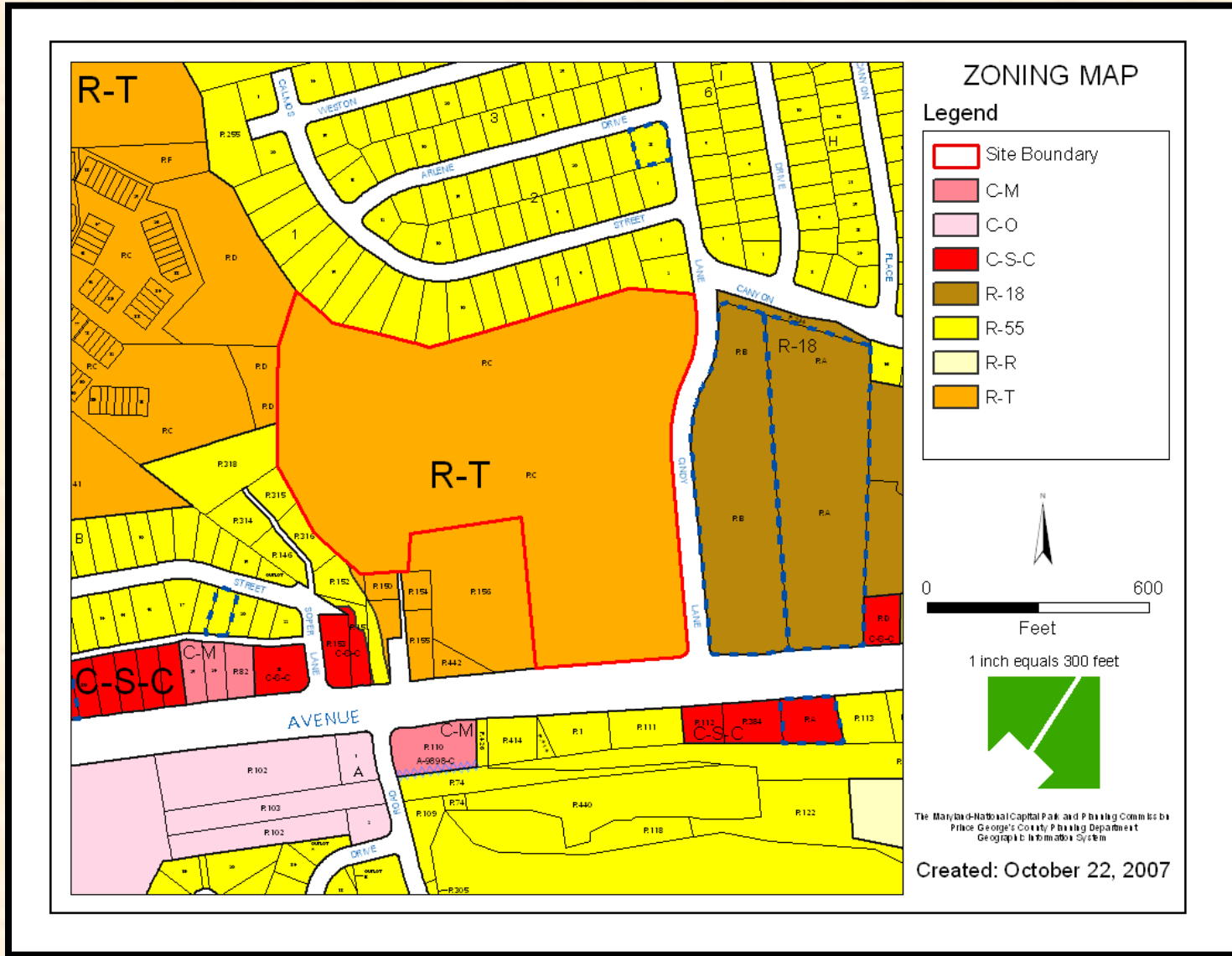
Created: October 22, 2007



ITEM

DSP-07061

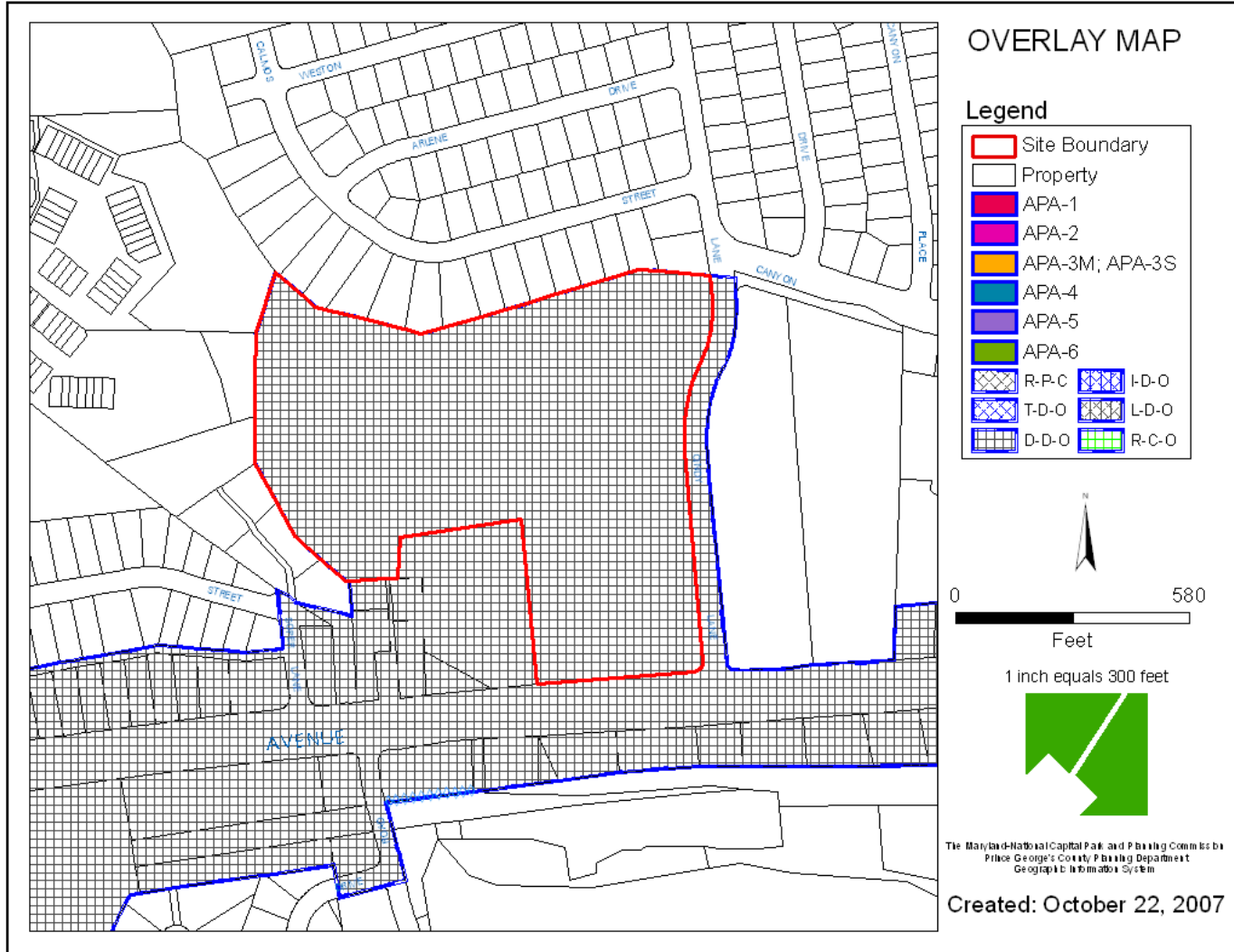
ZONING MAP



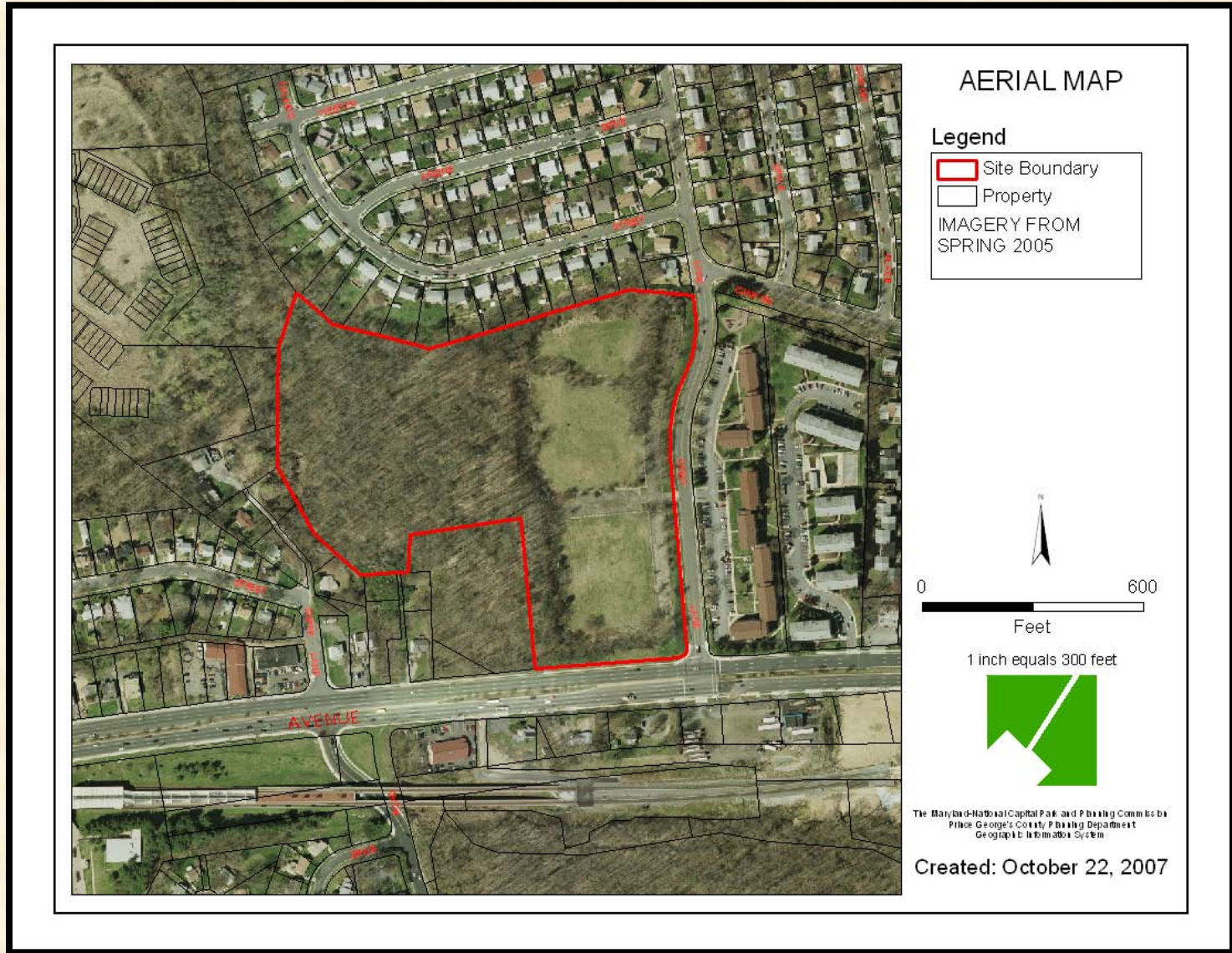
ITEM

DSP-07061

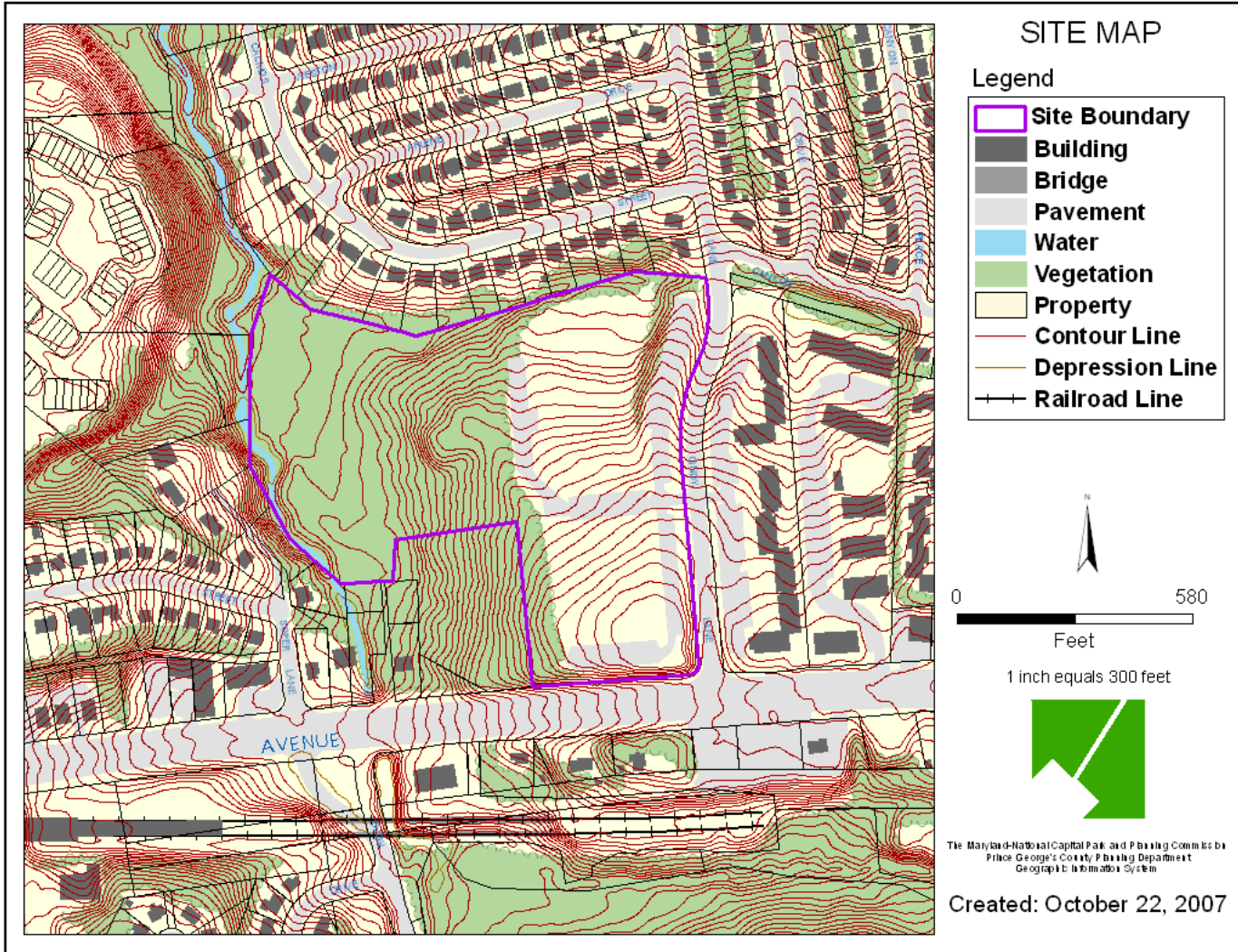
OVERLAY MAP



AERIAL PHOTO



SITE MAP



RENDERED LANDSCAPE PLAN



JEFFERSON & ADAMS FRONT ELEVATIONS WITH REAR LOAD GARAGE



6 UNIT BUILDING
 JEFFERSON I & II REAR GARAGE
 ADAMS I, II, & III REAR GARAGE

VILLAGES AT PEPPERMILL

ITEM

DSP-07061



JEFFERSON & ADAMS REAR ELEVATIONS



6 UNIT BUILDING
JEFFERSON I & II
ADAMS II & III

VILLAGES AT PEPPERMILL

ITEM

DSP-07061



JEFFERSON & ADAMS FRONT ELEVATIONS

MAINTENANCE FREE SHAKE

CLASSICAL WINDOW
PEDIMENT WITH KEYSTONE

MAINTENANCE FREE SIDING

METAL ROOF

STONE ACCENT

STONEJACK ARCH
WITH KEYSTONE

STONE

SYNTHETIC BOARD TRIM



ASPHALT SHINGLES

MAINTENANCE FREE SIDING

MAINTENANCE FREE
SHUTTERS

BRICK ROWLOCK AND
SOLDIER COURSE

BRICK

CLASSICAL ENTRANCE
FEATURES AND DETAILING



6 UNIT BUILDING
JEFFERSON I & II
ADAMS I, II, & III

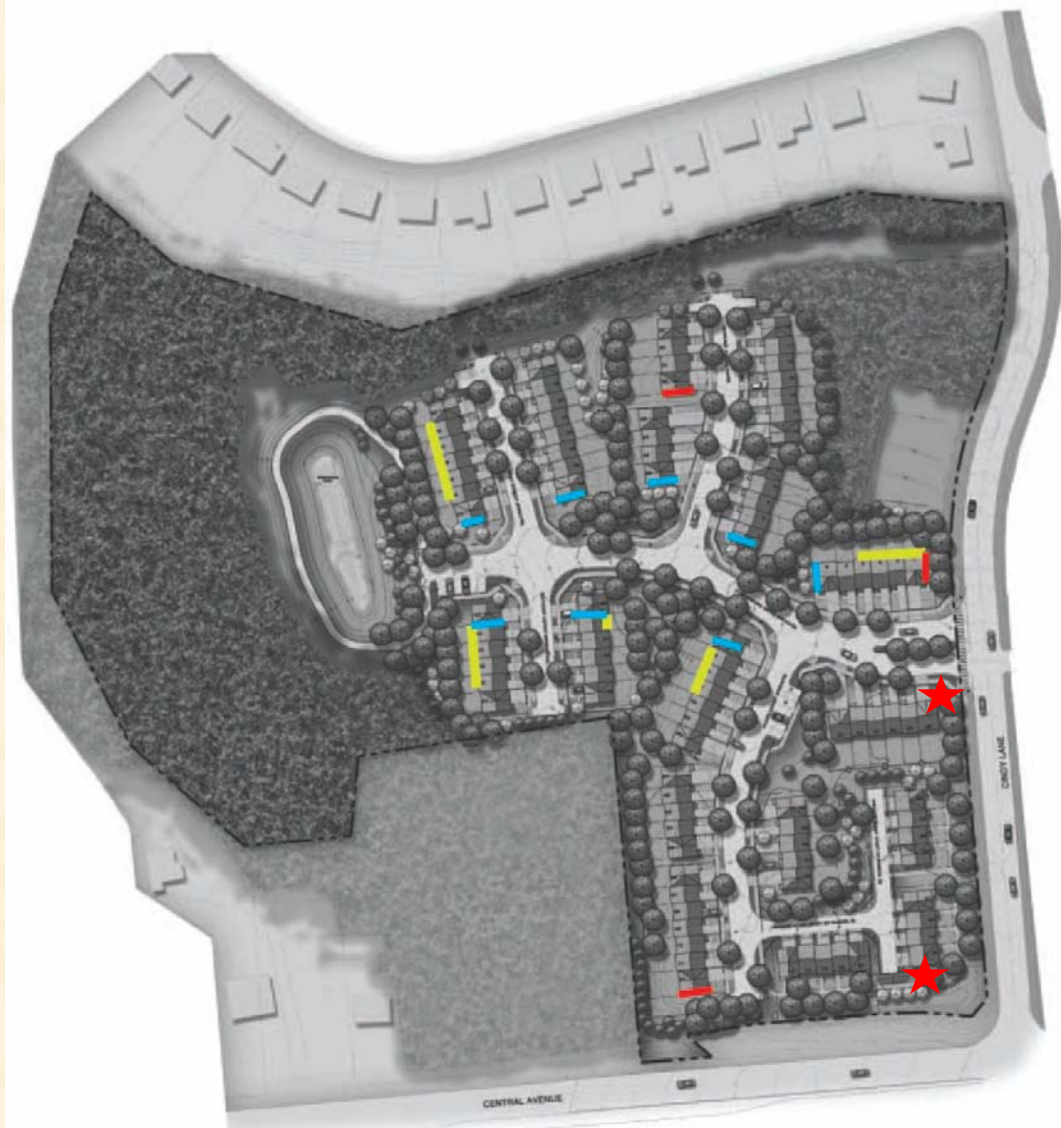
VILLAGES AT PEPPERMILL




ITEM


DSP-07061



ADDITIONAL ARCHITECTURAL TREATMENTS



-  Units with lower level brick or stone on the rear of the unit
-  Units with full side brick or stone
-  Units with two story side brick or stone

 Additional Treatment Recommended by Staff

ITEM	DSP-07061
------	-----------

JEFFERSON & ADAMS REAR ELEVATIONS

ASPHALT SHINGLES

MAINTENANCE FREE SIDING

MAINTENANCE FREE SHUTTERS

BRICK ROWLOCK AND SOLDIER COURSE

BRICK

ASPHALT SHINGLES

MAINTENANCE FREE SIDING

MAINTENANCE FREE SHUTTERS

STONE ACCENT

STONE



JEFFERSON REAR ADAMS III REAR ADAMS II REAR ADAMS II REAR ADAMS III REAR JEFFERSON REAR



6 UNIT BUILDING
JEFFERSON I & II
ADAMS II & III

VILLAGES AT PEPPERMILL

ITEM

DSP-07061



JEFFERSON & ADAMS, SIDE & REAR ELEVATIONS



ASPHALT SHINGLES

MAINTENANCE FREE SIDING

ADAMS II REAR



ASPHALT SHINGLES

MAINTENANCE FREE SIDING

ADAMS III REAR



ASPHALT SHINGLES

MAINTENANCE FREE SIDING

SYNTHETIC BOARD TRIM

MAINTENANCE FREE SHUTTERS

BRICK ROWLOCK AND SOLDIER COURSE

BRICK JACK ARCH WITH KEYSTONE

BRICK

CLASSICAL ENTRANCE FEATURES AND DETAILING

JEFFERSON SIDE



ASPHALT SHINGLES

MAINTENANCE FREE SIDING

JEFFERSON REAR



SIDE & REAR ELEVATIONS
JEFFERSON & ADAMS

VILLAGES AT PEPPERMILL

ITEM

DSP-07061



JEFFERSON SIDE ELEVATIONS



- ASPHALT SHINGLES
- MAINTENANCE FREE SIDING
- SYNTHETIC BOARD TRIM
- MAINTENANCE FREE SHUTTERS
- BRICK ROWLOCK AND SOLDIER COURSE
- BRICK JACK ARCH WITH KEYSTONE
- BRICK
- CLASSICAL ENTRANCE FEATURES AND DETAILING

JEFFERSON SIDE



- ASPHALT SHINGLES
- MAINTENANCE FREE SIDING
- SYNTHETIC BOARD TRIM
- MAINTENANCE FREE SHUTTERS
- BRICK ROWLOCK AND SOLDIER COURSE
- BRICK JACK ARCH WITH KEYSTONE
- BRICK
- CLASSICAL ENTRANCE FEATURES AND DETAILING

JEFFERSON SIDE



SIDE ELEVATIONS
JEFFERSON & ADAMS

VILLAGES AT PEPPERMILL



ITEM	DSP-07061
------	-----------

Hillside Condition

Villages at
Pepper Mill
Property



Central Avenue

| Sidewalk

| Central Ave Right of Way

Proximity to Metro Station

Villages at Pepper Mill
Property



Sidewalk

Central Avenue

Addison Road Metro

Adjacent Conditions

Central Gardens
Apartments



Cindy Lane



Central Ave

Adjacent Community

Villages at Pepper Mill
Property



Central Gardens Apartments
and Playground

| Cindy Lane

| Existing Community

Adjacent Conditions



Villages at Pepper Mill
Property

Cindy Lane

ITEM	DSP-07061
------	-----------

Site Conditions



Villages at Pepper Mill Property

SIGN DETAIL



**If you wish to speak
and/or become a
Party of Record, please
sign in at the front desk**

**Note: Please turn off all
cell phones & pagers**