

ITEM # :

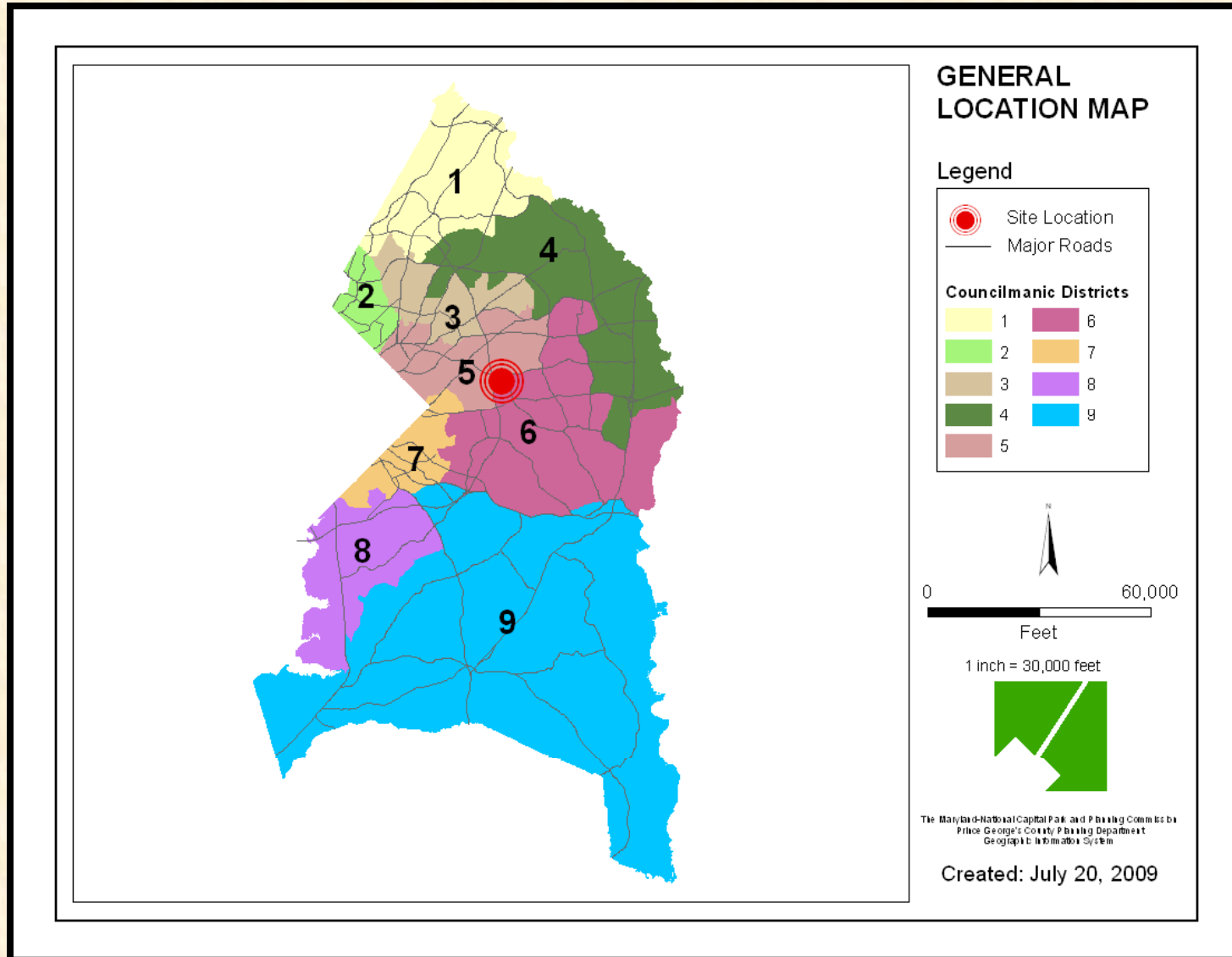
CASE NO: DSP-09021 & DDS-598

INGLEWOOD BUSINESS PARK  
LARGO FAIRFIELD INN HOTEL



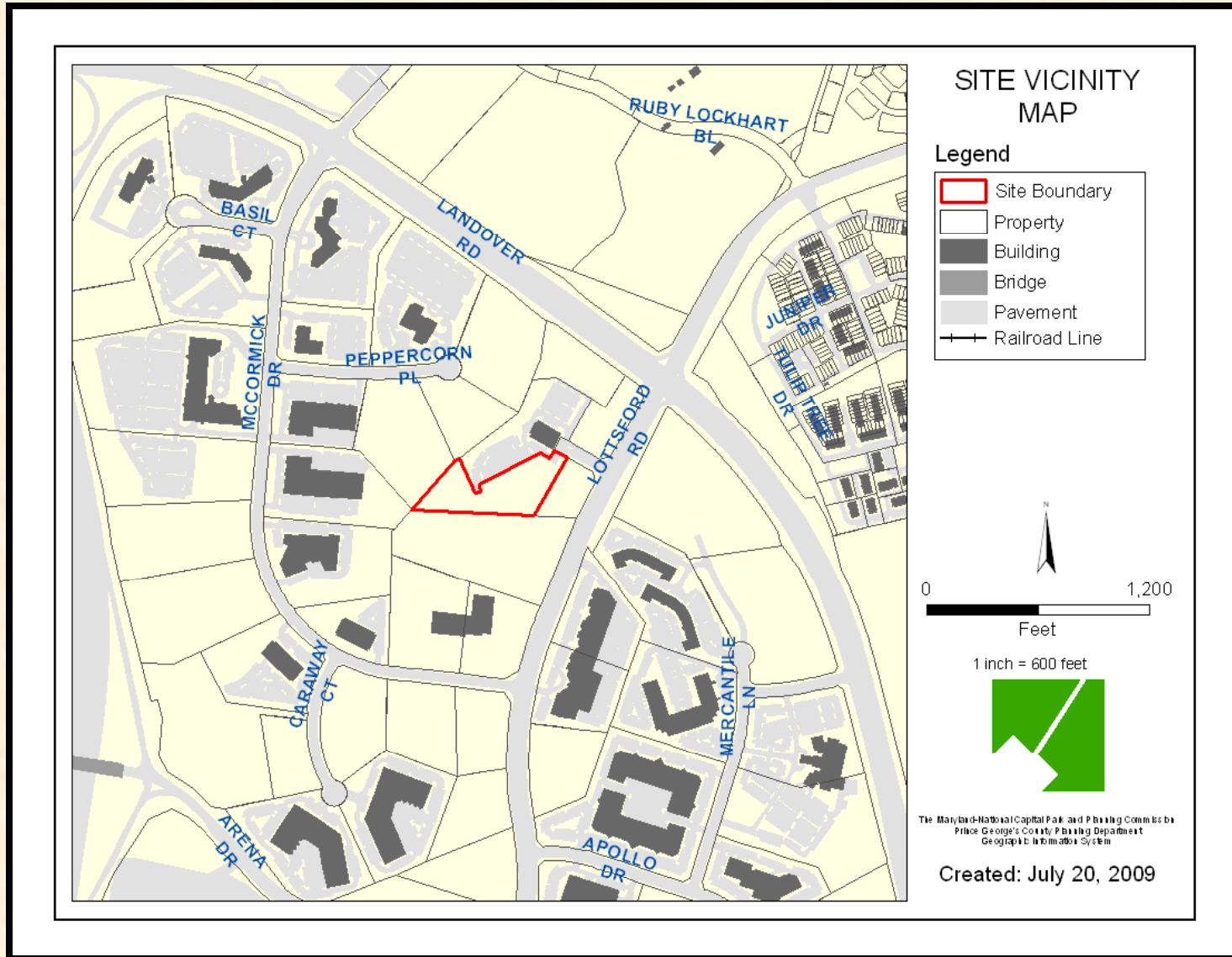
THE PRINCE GEORGE'S COUNTY PLANNING DEPARTMENT

# GENERAL LOCATION MAP



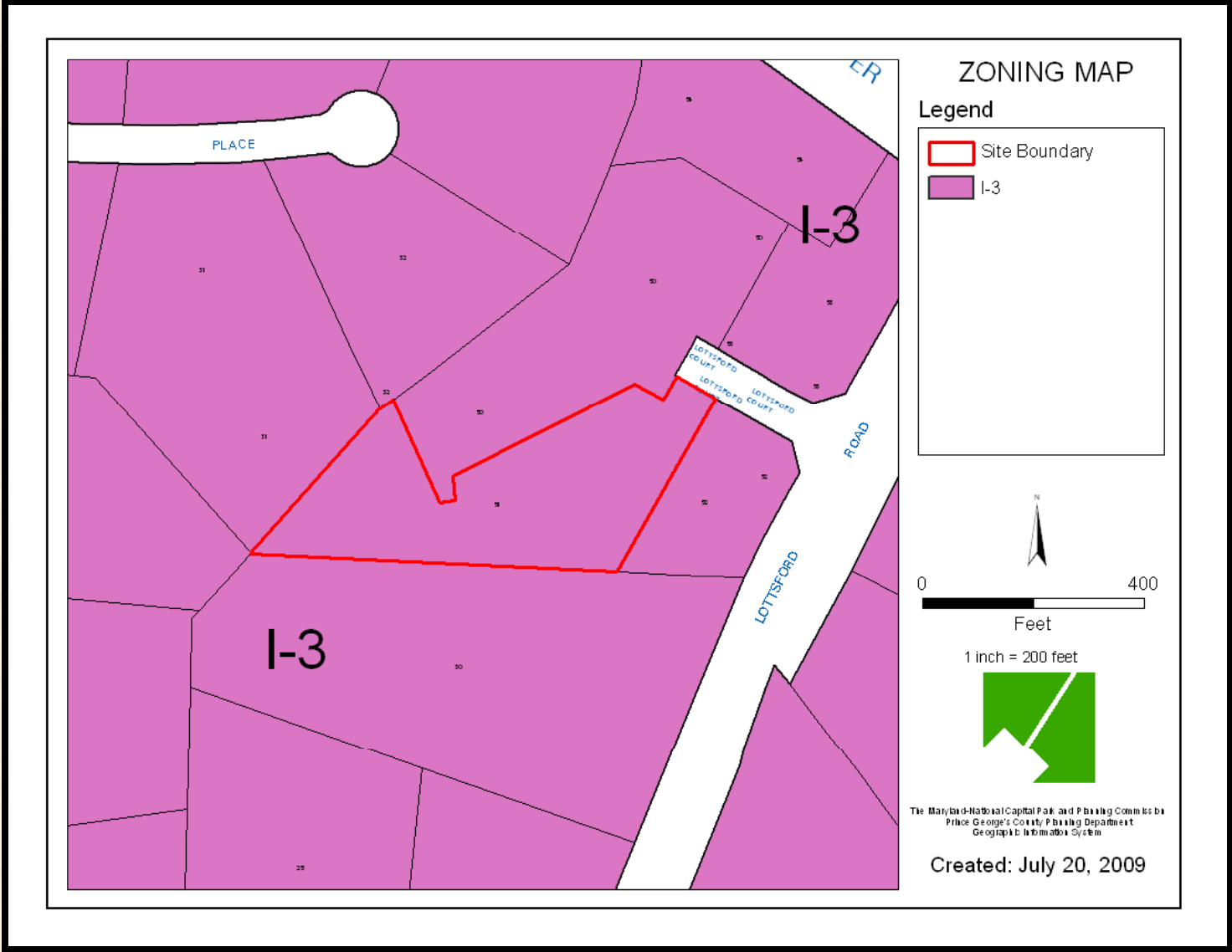
ITEM	DSP-09021 & DDS-598
------	------------------------

# SITE VICINITY MAP



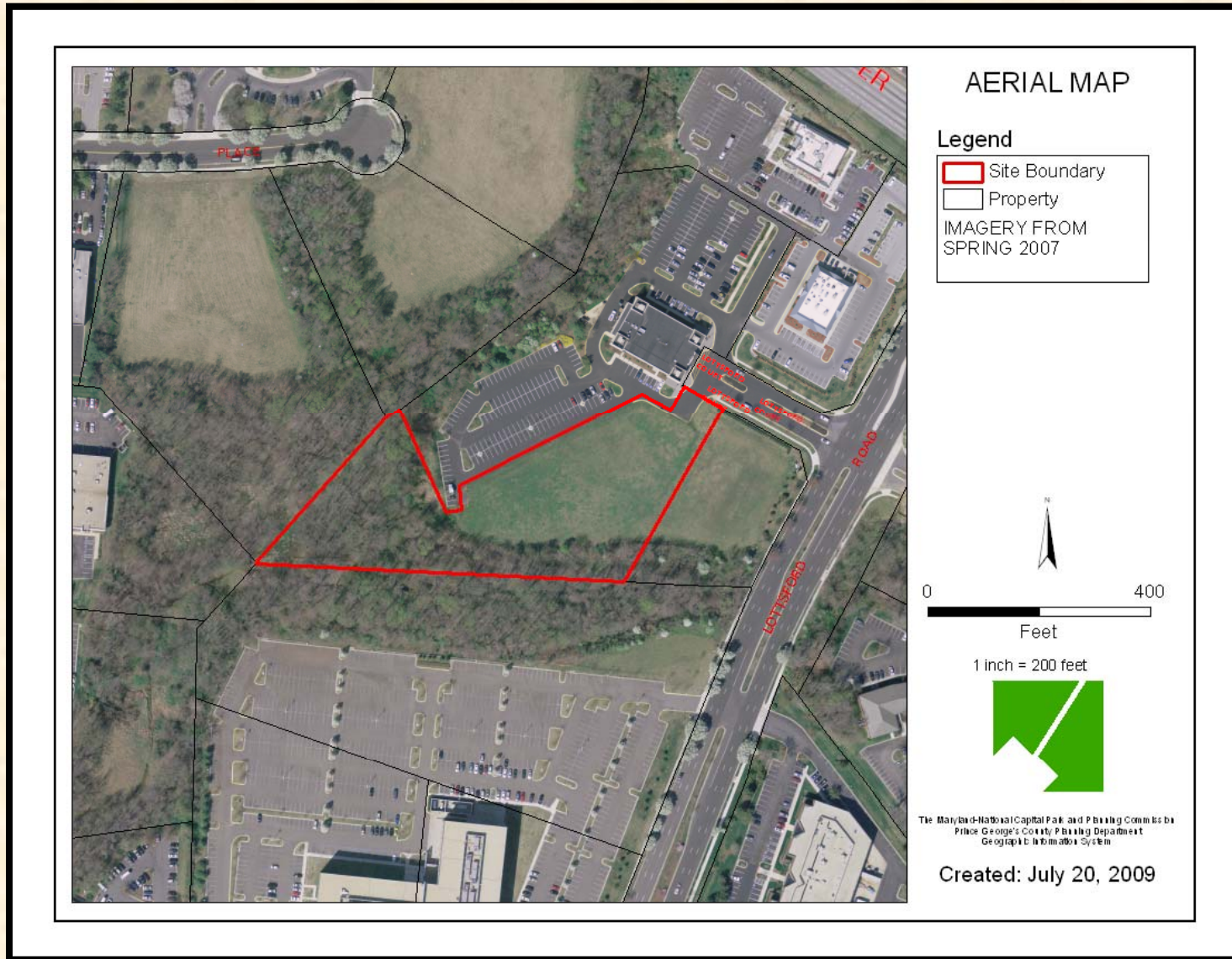
ITEM	DSP-09021 & DDS-598
------	------------------------

# ZONING MAP



ITEM	DSP-09021 & DDS-598
------	------------------------

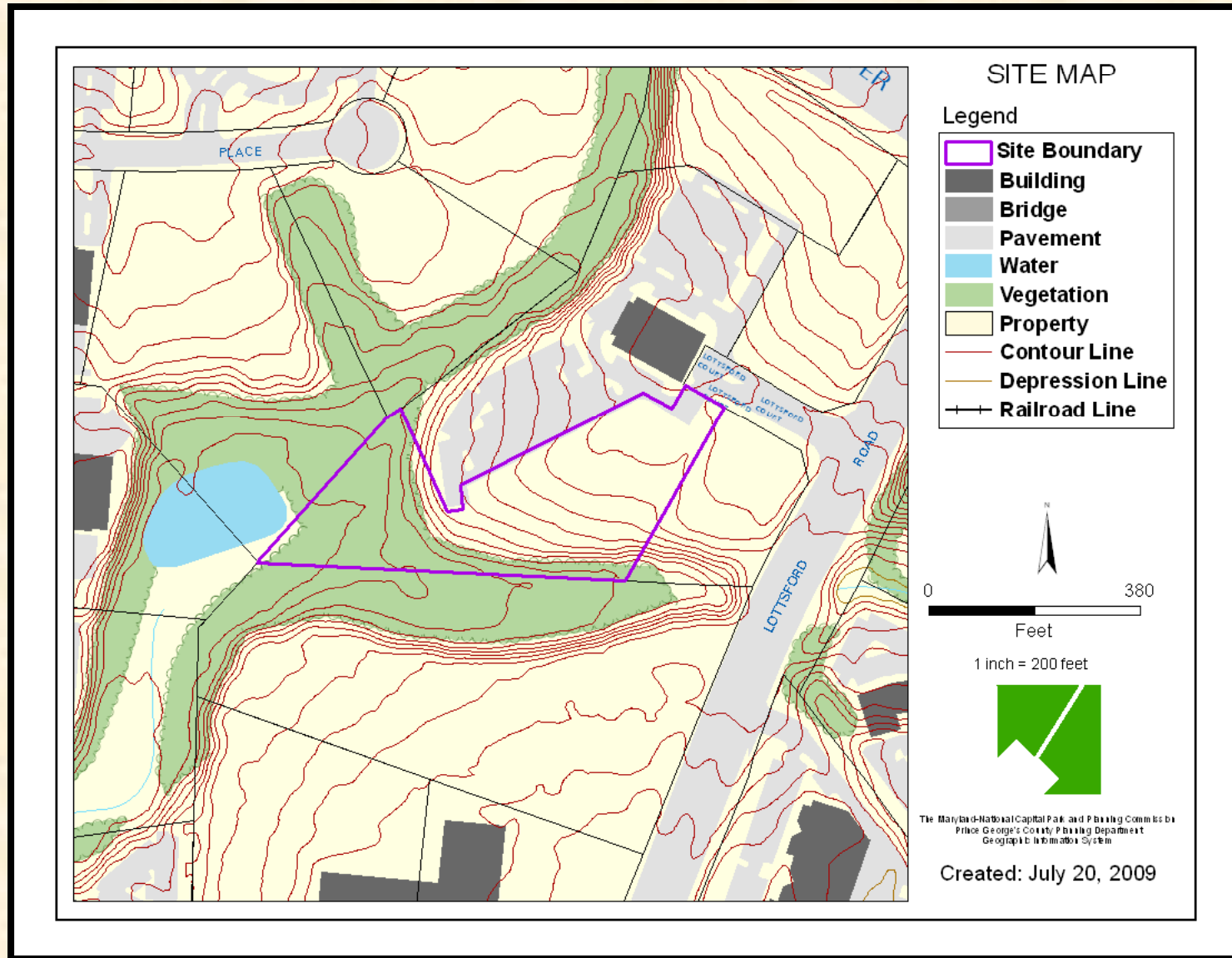
# AERIAL PHOTO



ITEM

DSP-09021 &  
DDS-598

# SITE MAP



ITEM DSP-09021 &  
DDS-598

# SITE PLAN



ITEM	DSP-09021 & DDS-598
------	------------------------

# FRONT ELEVATION (EAST) LOOKING TOWARD LOTTSFORD DRIVE



ITEM	DSP-09021 & DDS-598
------	------------------------

# REAR ELEVATION (WEST)



ITEM	DSP-09021 & DDS-598
------	------------------------

# SOUTH SIDE ELEVATION CONSERVATION AREA



ITEM	DSP-09021 & DDS-598
------	------------------------

# NORTH SIDE ELEVATION LOTTSFORD COURT



ITEM	DSP-09021 & DDS-598
------	------------------------

# SIGN DETAIL

## Monument Signs

### COLORS

- Filler, retainer and trimcap: painted blue #MP02110 and red #MP08937, Matthews, satin finish.
- Background blue #VT9682 and red #VT1331 (#MP08937 Matthews, satin finish).
- All other copy is white.
- Cladding painted grey #MP20140, Matthews, gloss finish.

### MATERIALS

#### FI Monument 10 and FI Monument 20

- .081 thk aluminum filler, 8" overall depth, painted blue and red.
- 3/16" thk Lexan faces, pigmented white #7328, vinyl graphic applied on first surface by cold transfer.
- 1" Jewelle trimcap, cemented to Lexan faces and painted blue and red.
- Illuminated by fluorescent lamps, H/O.
- .081 thk aluminum cladding painted grey.

FI Monument 20	3'-7" X 5'-8"	5'-0"
----------------	---------------	-------

- TOTAL SIGN LETTERING AREA: 4.2 S.F. (INCLUDING SYMBOL)
- SIGN FACE TO BE THE SAME ON BOTH SIDES OF SIGN.



FI Monument 20



ITEM	DSP-09021 & DDS-598
------	------------------------

If you wish to speak  
and/or become a  
Party of Record, please  
sign in at the front desk

Note: Please turn off all  
cell phones