

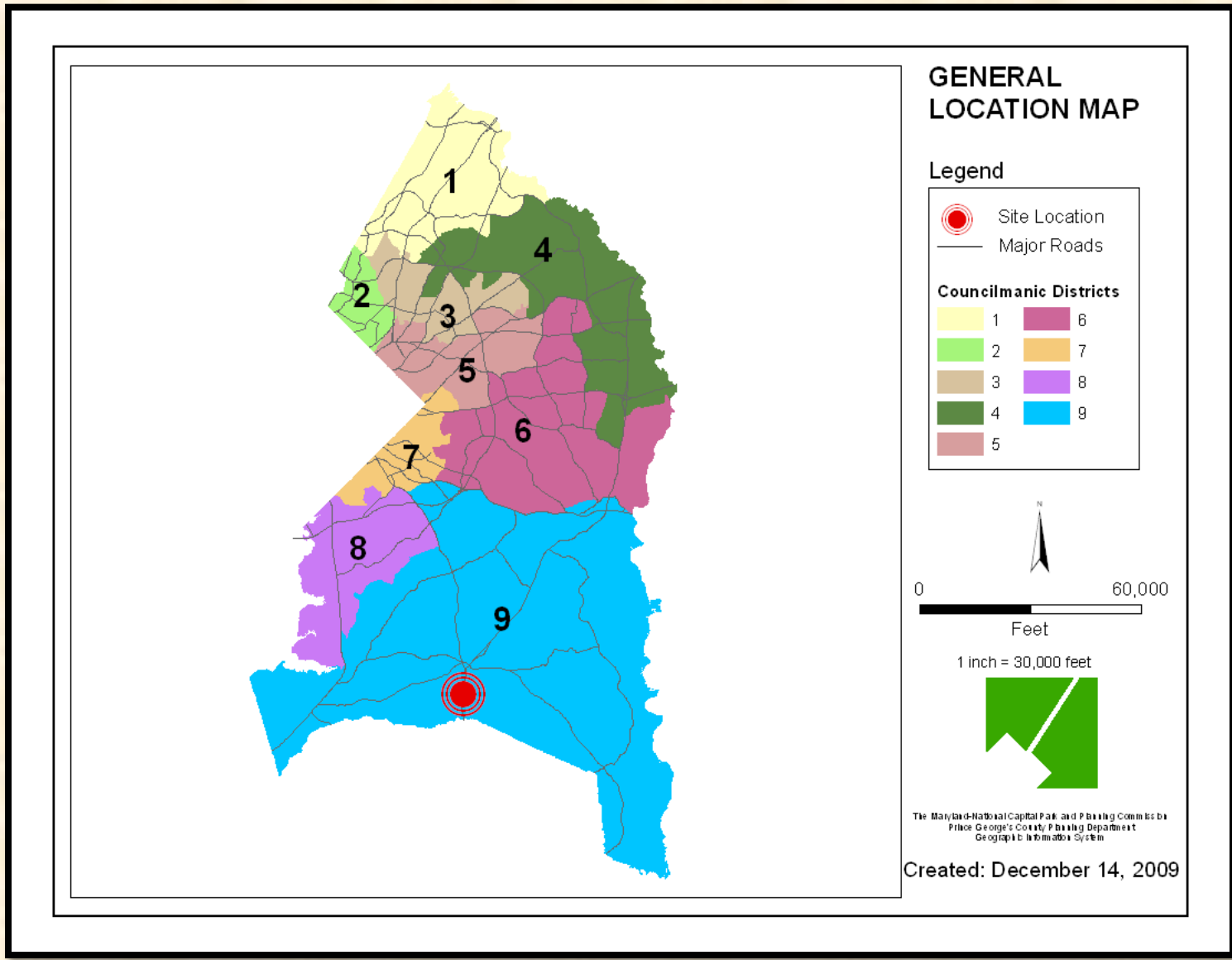
ITEM # :

CASE NO: DSP-07076-01

**BRANDYWINE CROSSING
PHASE II**



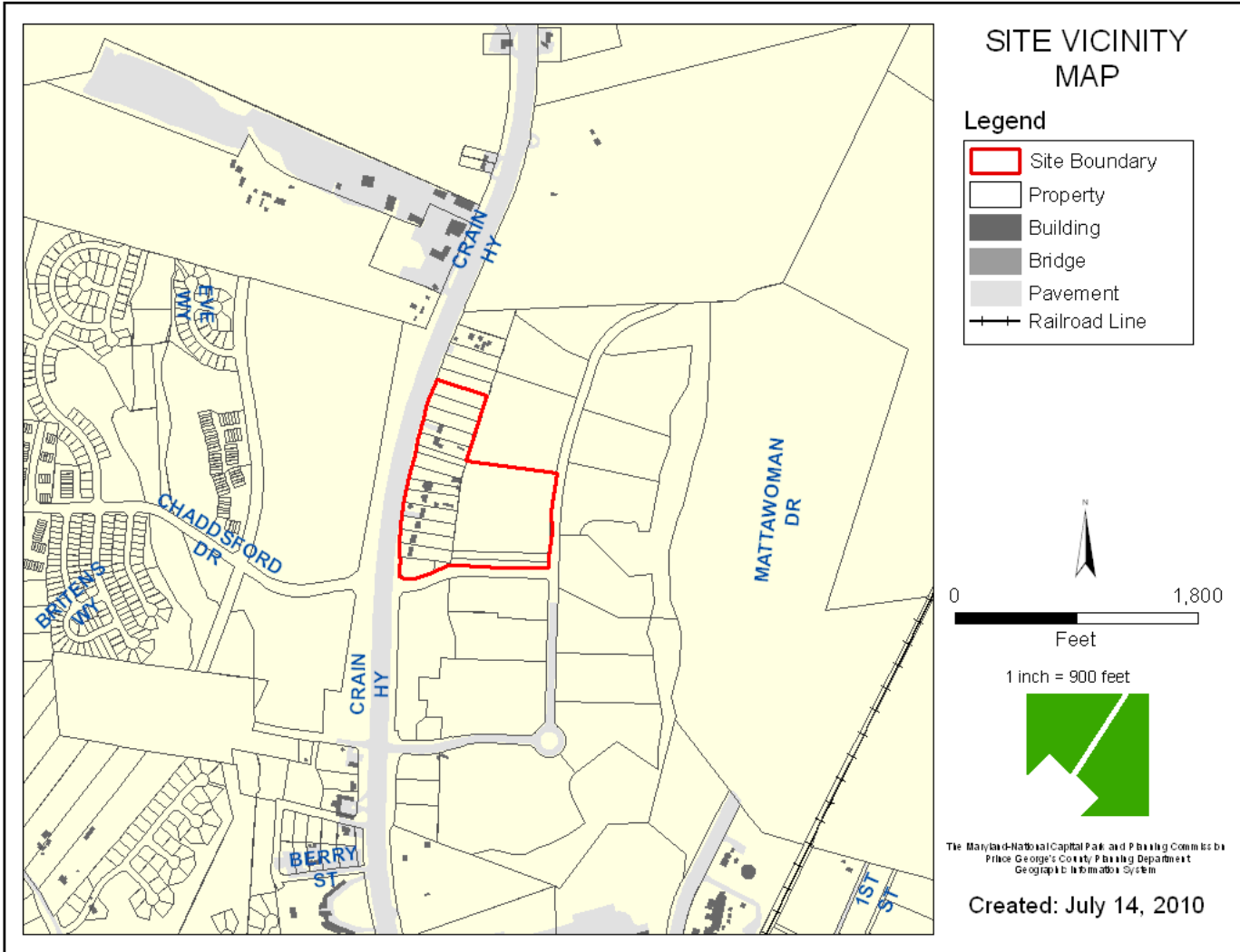
GENERAL LOCATION MAP



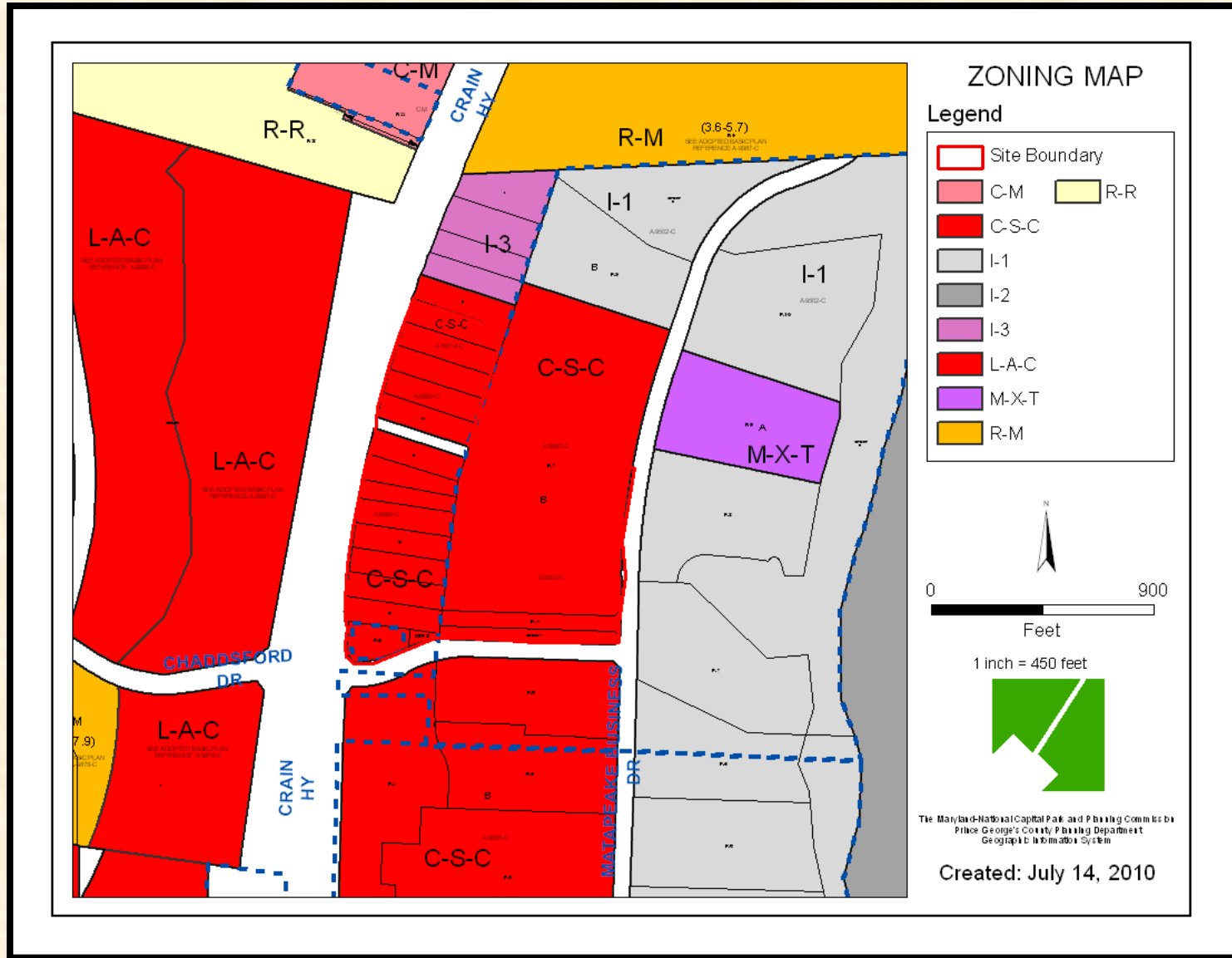
ITEM

DSP-07076-01

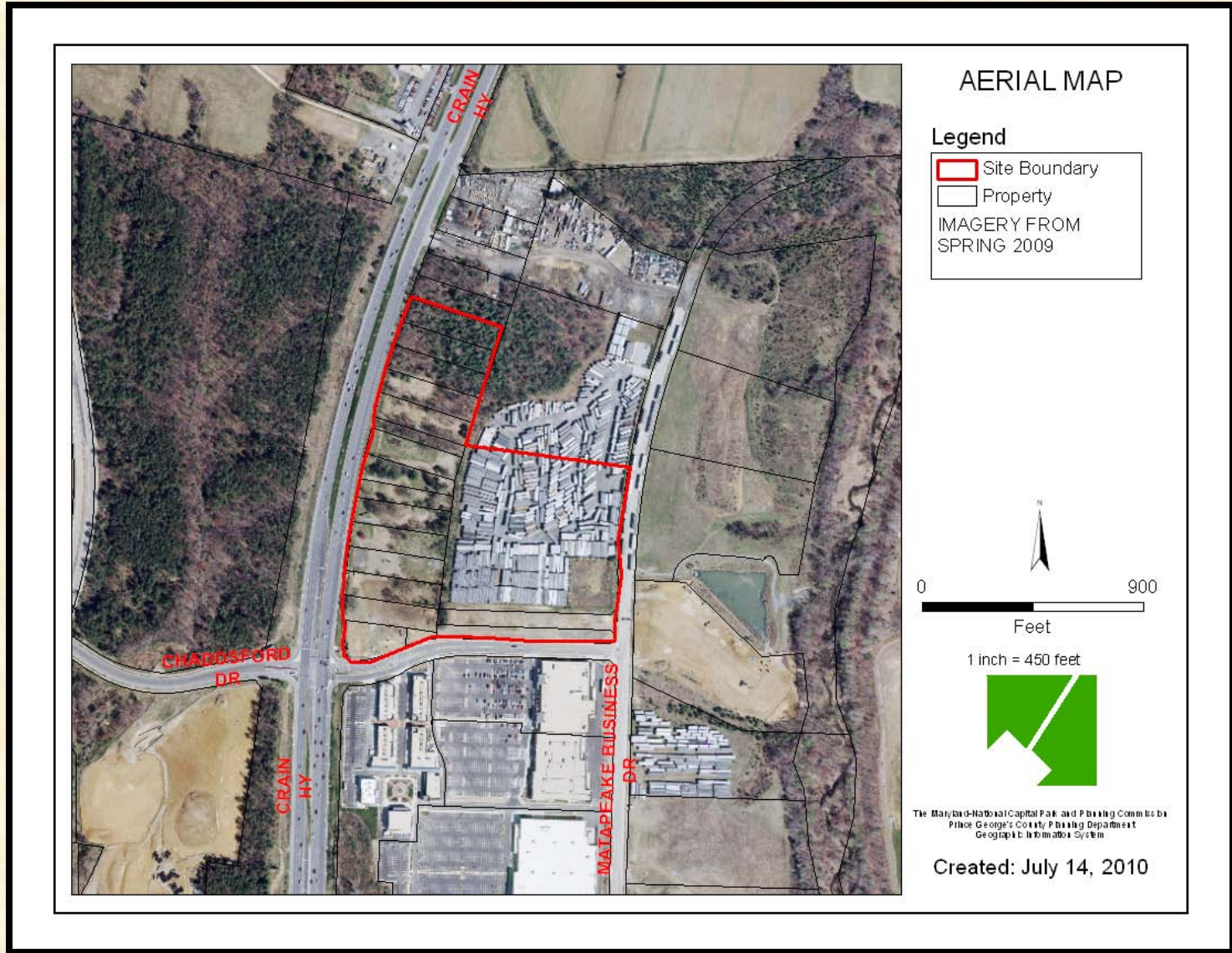
SITE VICINITY MAP



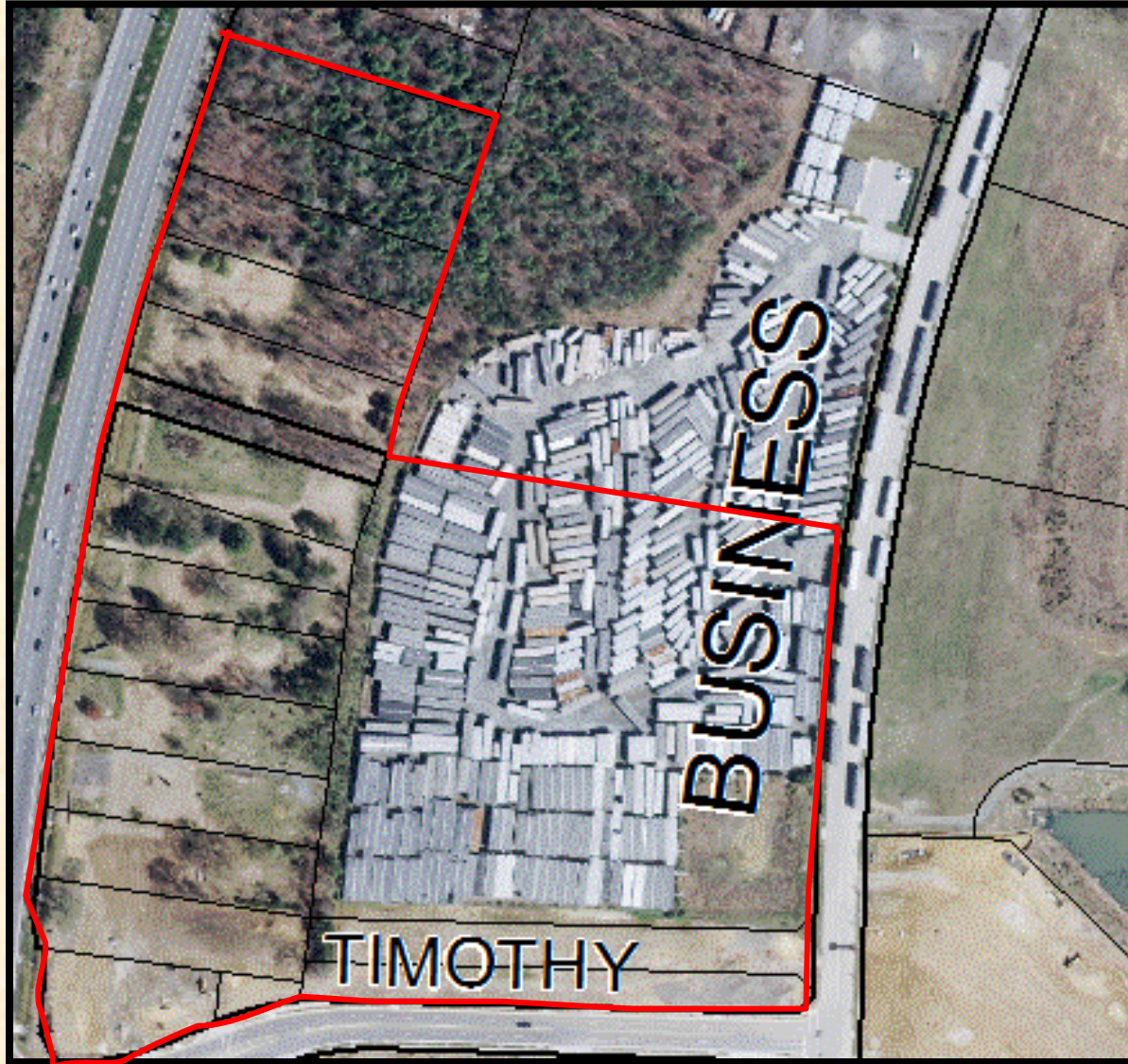
ZONING MAP



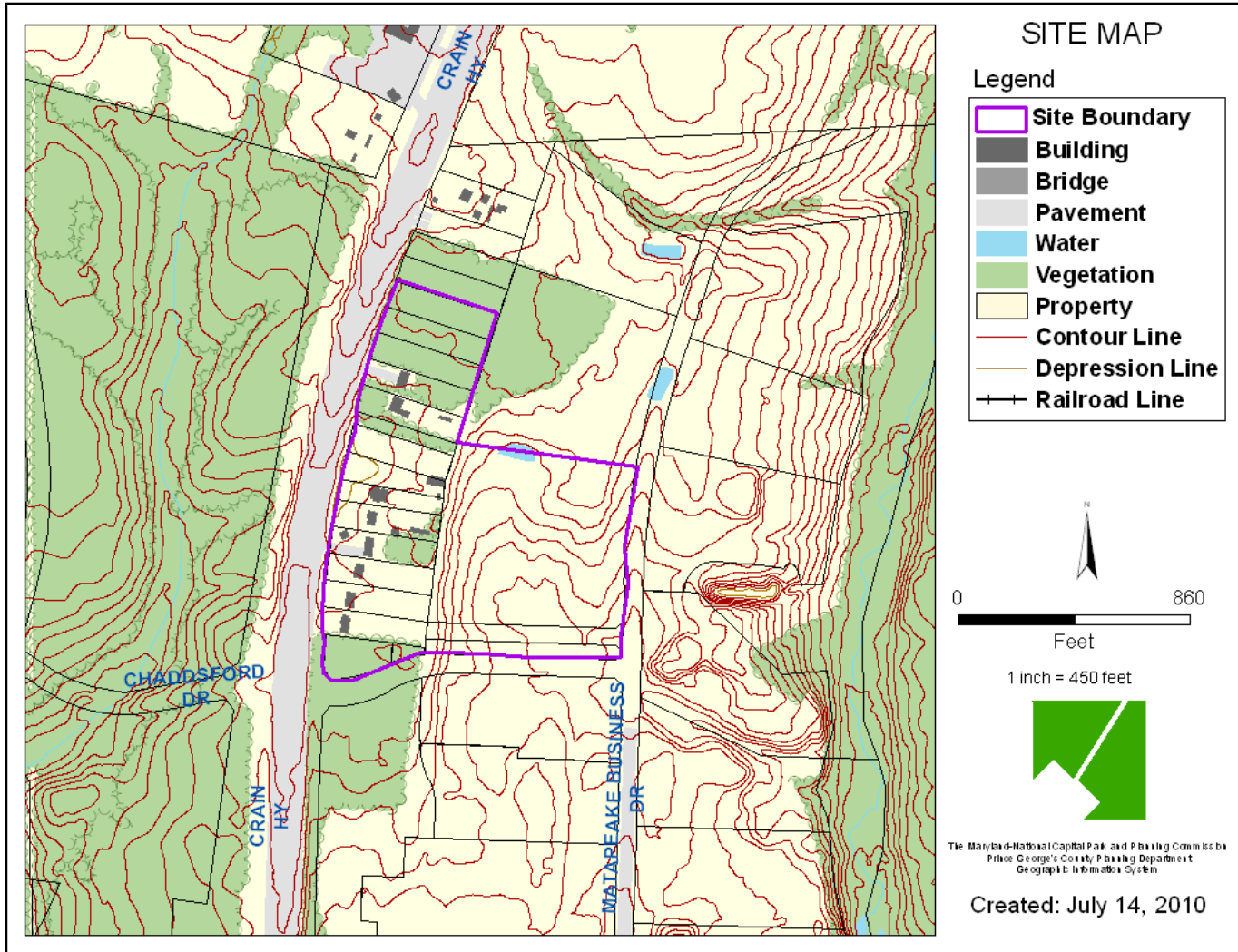
AERIAL PHOTO



AERIAL PHOTO DETAIL



SITE MAP



PREVIOUSLY APPROVED PHASE I & II



ITEM

DSP-07076-01

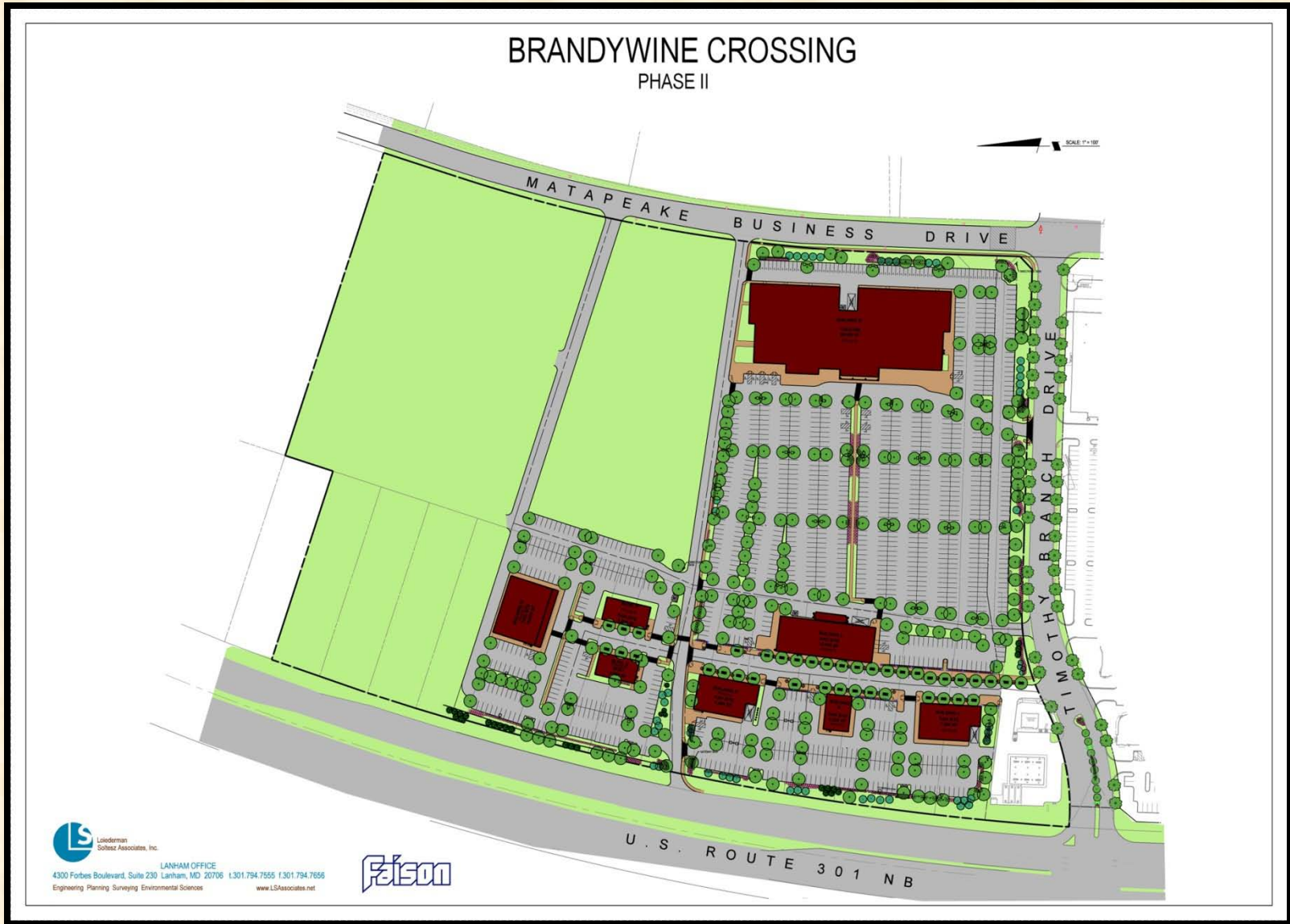
SUBJECT DSP REVISION & PHASE I



ITEM

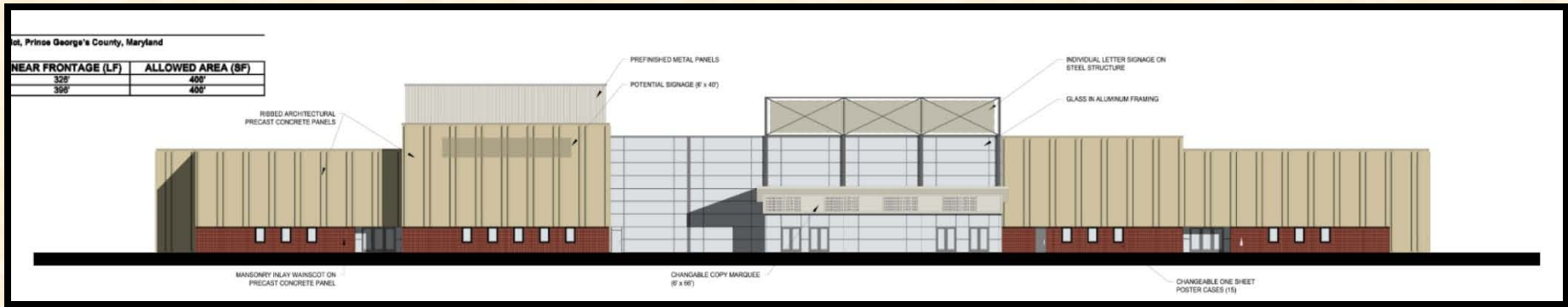
DSP-07076-01

SITE PLAN RENDERING



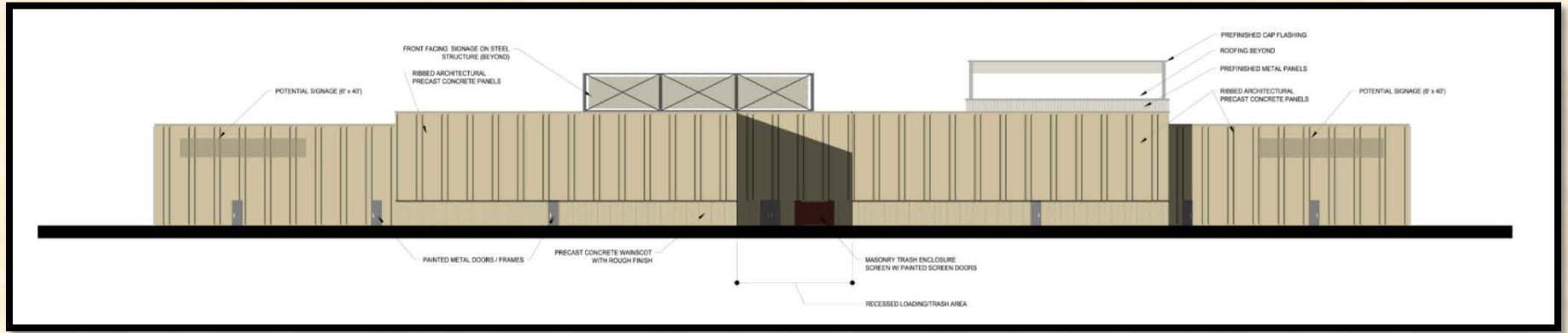
THEATER

FRONT ELEVATION (WEST)



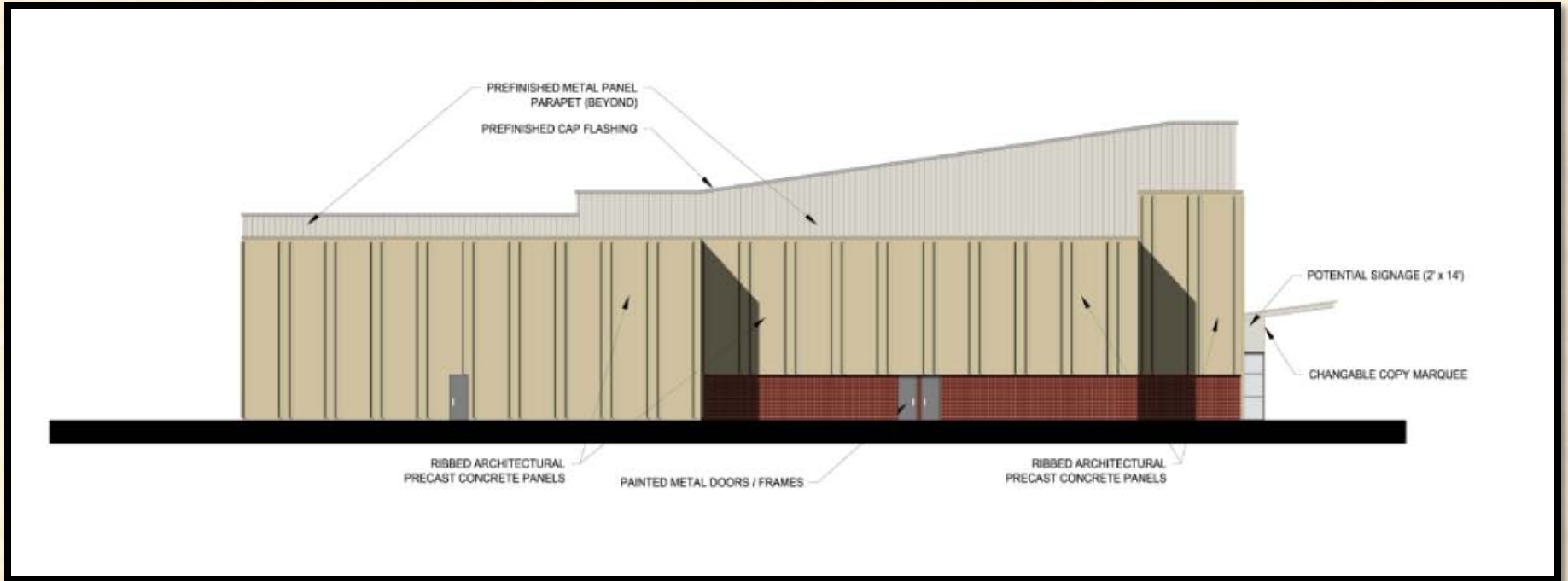
THEATER

REAR ELEVATION (EAST)



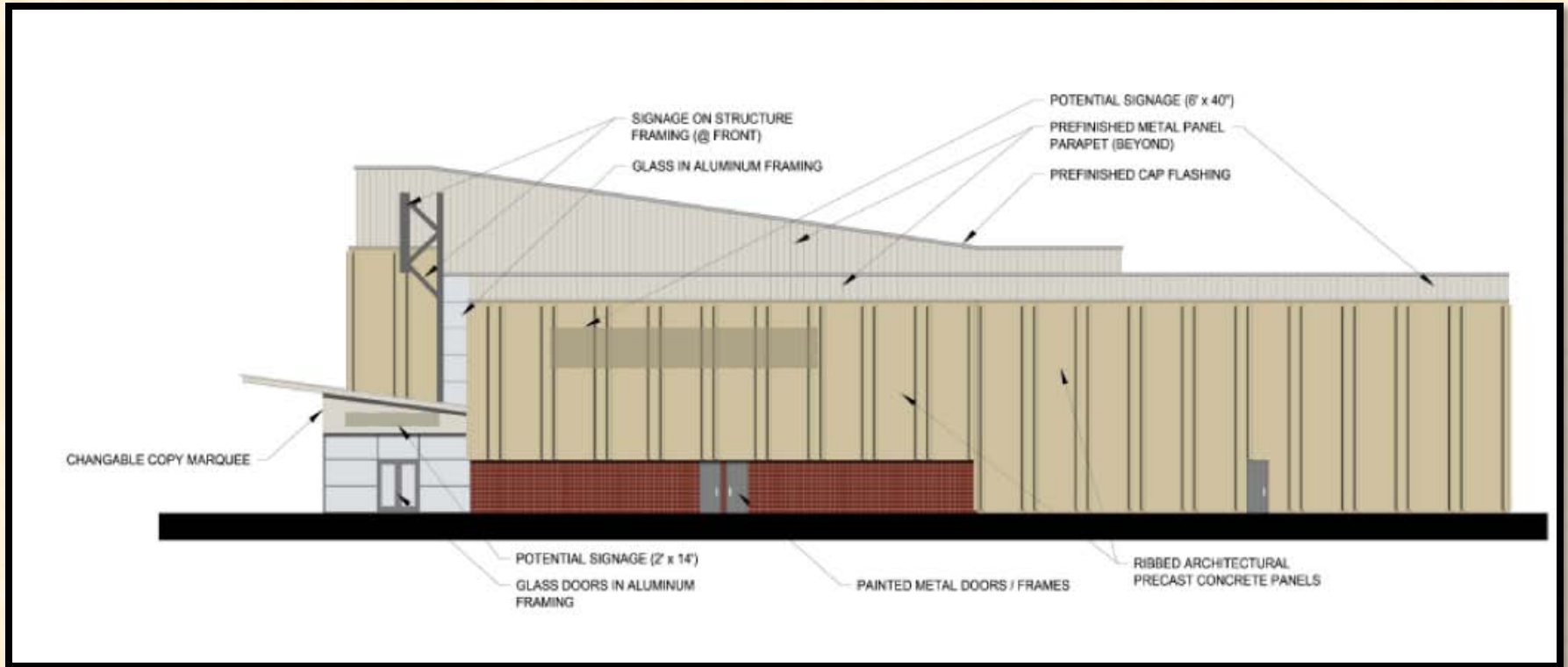
THEATER

NORTH SIDE ELEVATION



THEATER

SOUTH SIDE ELEVATION



THEATER PERSPECTIVE



JULY 8, 2010



Brandywine Crossing Phase 2
PRINCE GEORGE'S COUNTY, MARYLAND

Perspective Rendering

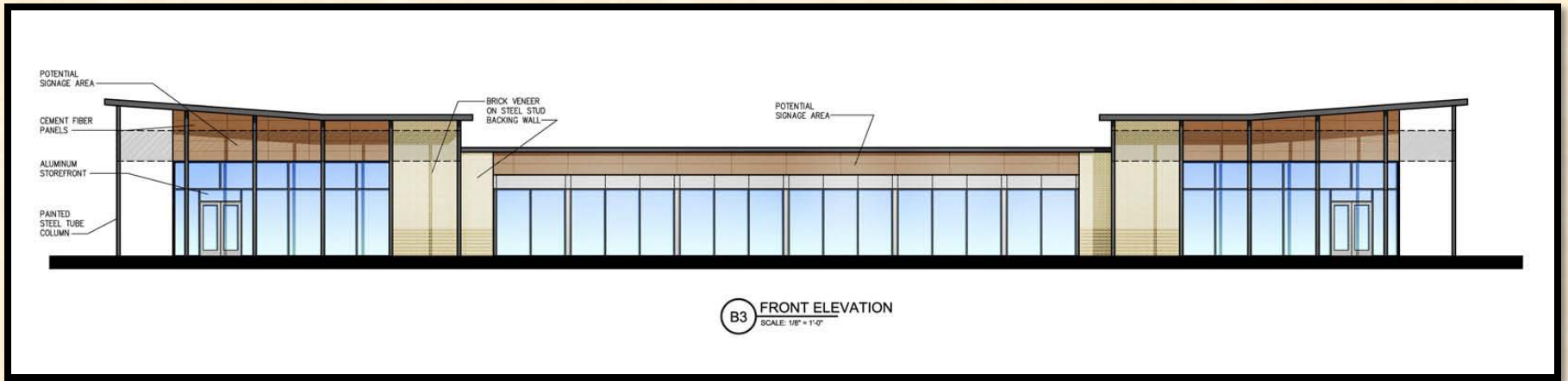


ITEM

DSP-07076-01

BUILDING L

FRONT ELEVATION (WEST)

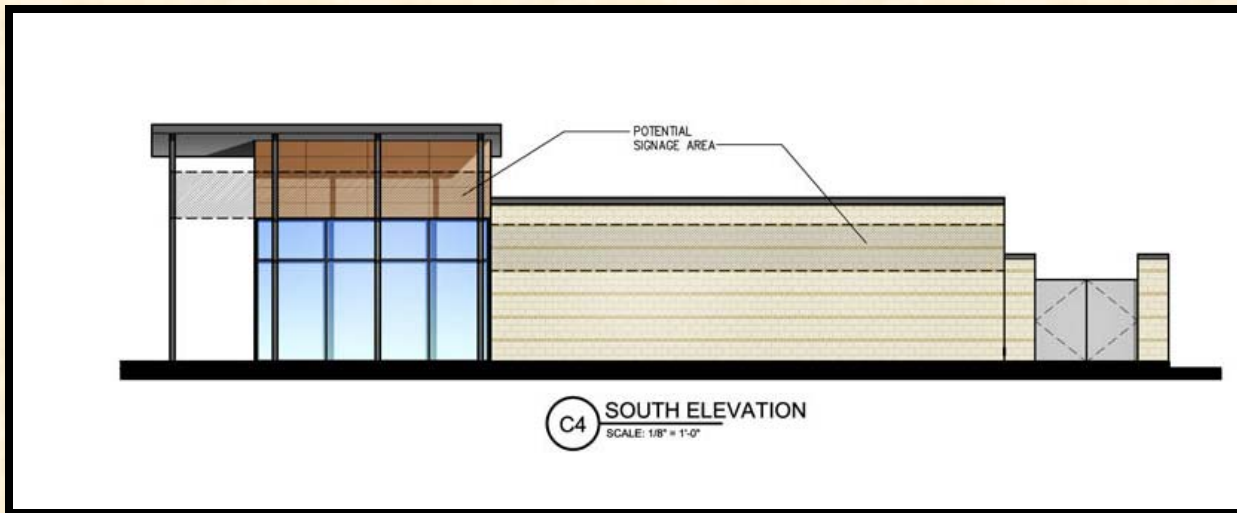
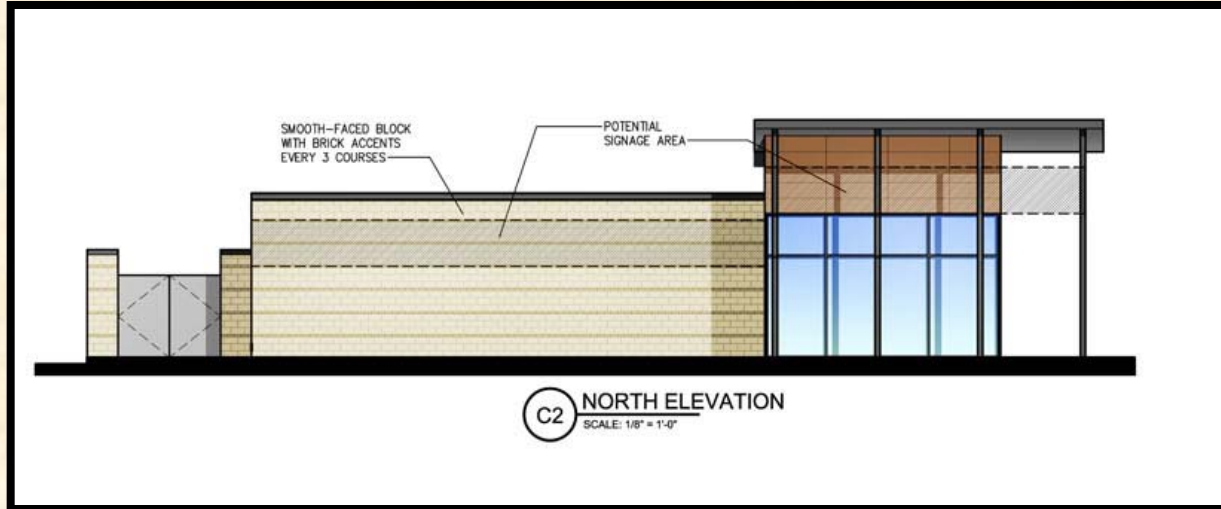


REAR ELEVATION (EAST)



D3 REAR ELEVATION
SCALE: 1/8" = 1'-0"

SIDE ELEVATIONS



PERSPECTIVE



Falson

JUNE 23, 2010



Brandywine Crossing Phase 2
PRINCE GEORGE'S COUNTY, MARYLAND

► Perspective Rendering

J. Peterson
6/10



ITEM

DSP-07076-01

BRANDYWINE CROSSING: PHASE ONE



If you wish to speak
and/or become a
Party of Record, please
sign in at the front desk

Note: Please turn off all
cell phones