

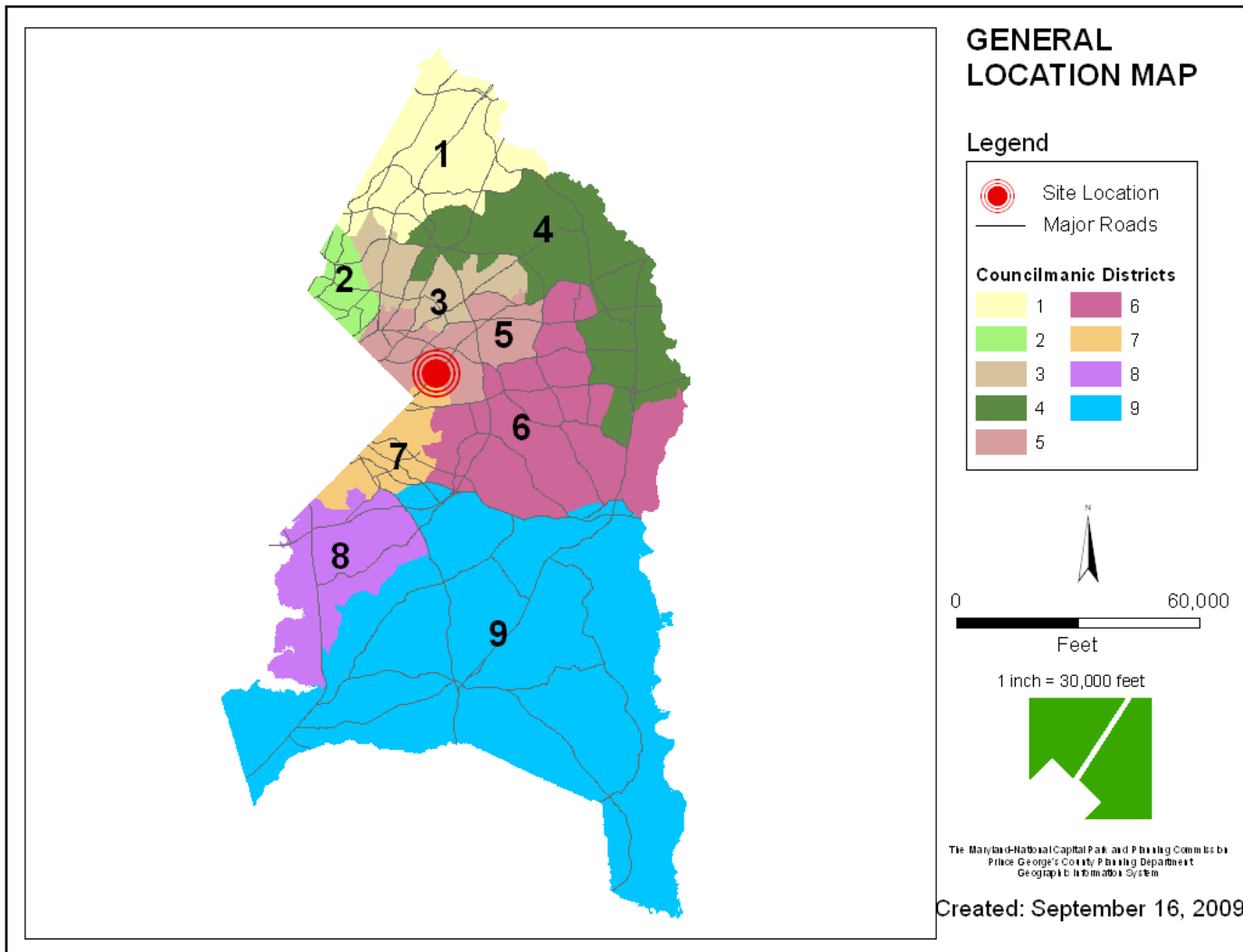
ITEM # :

CASE NO: V-09005

HUNTSVILLE



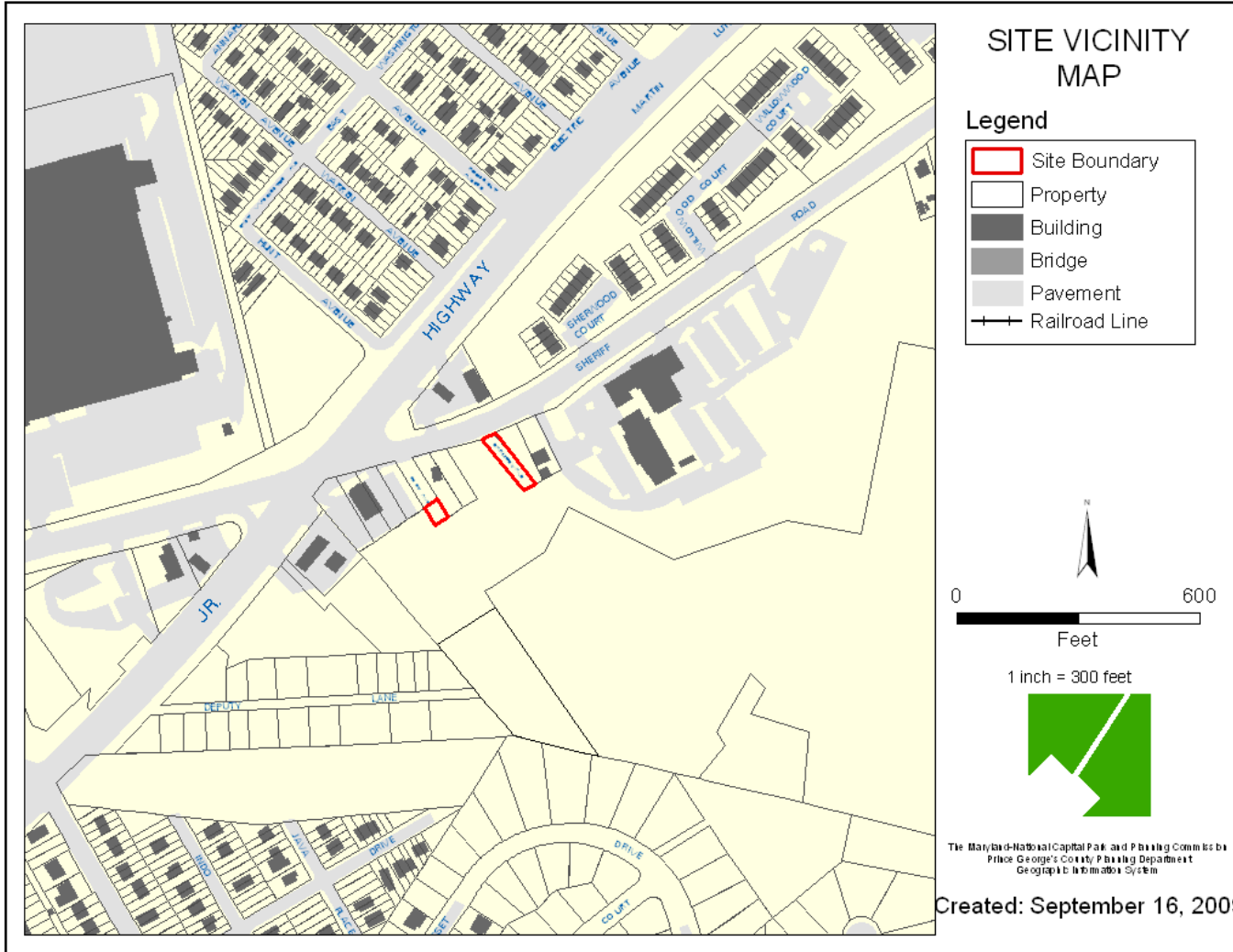
GENERAL LOCATION MAP



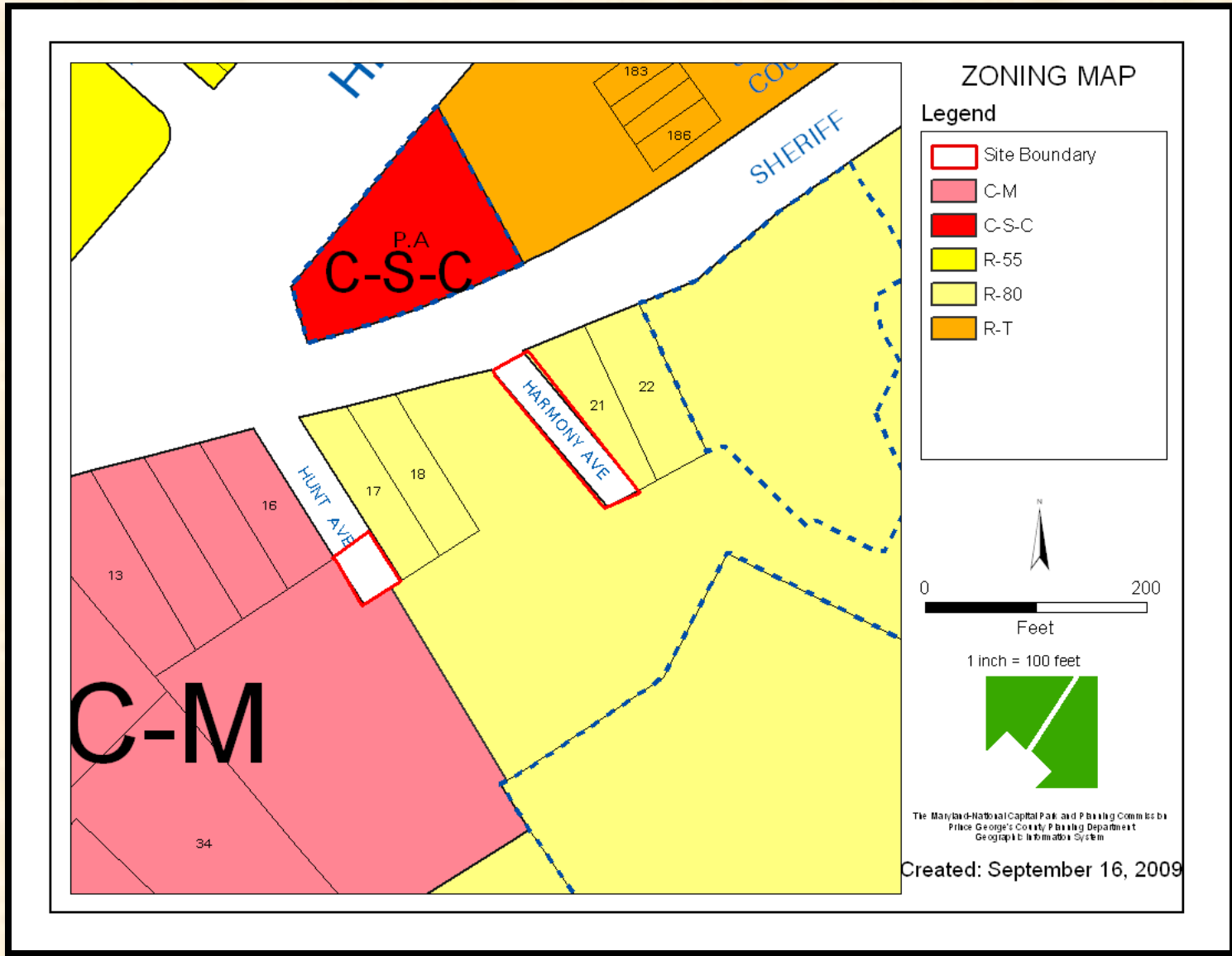
ITEM

V-09005

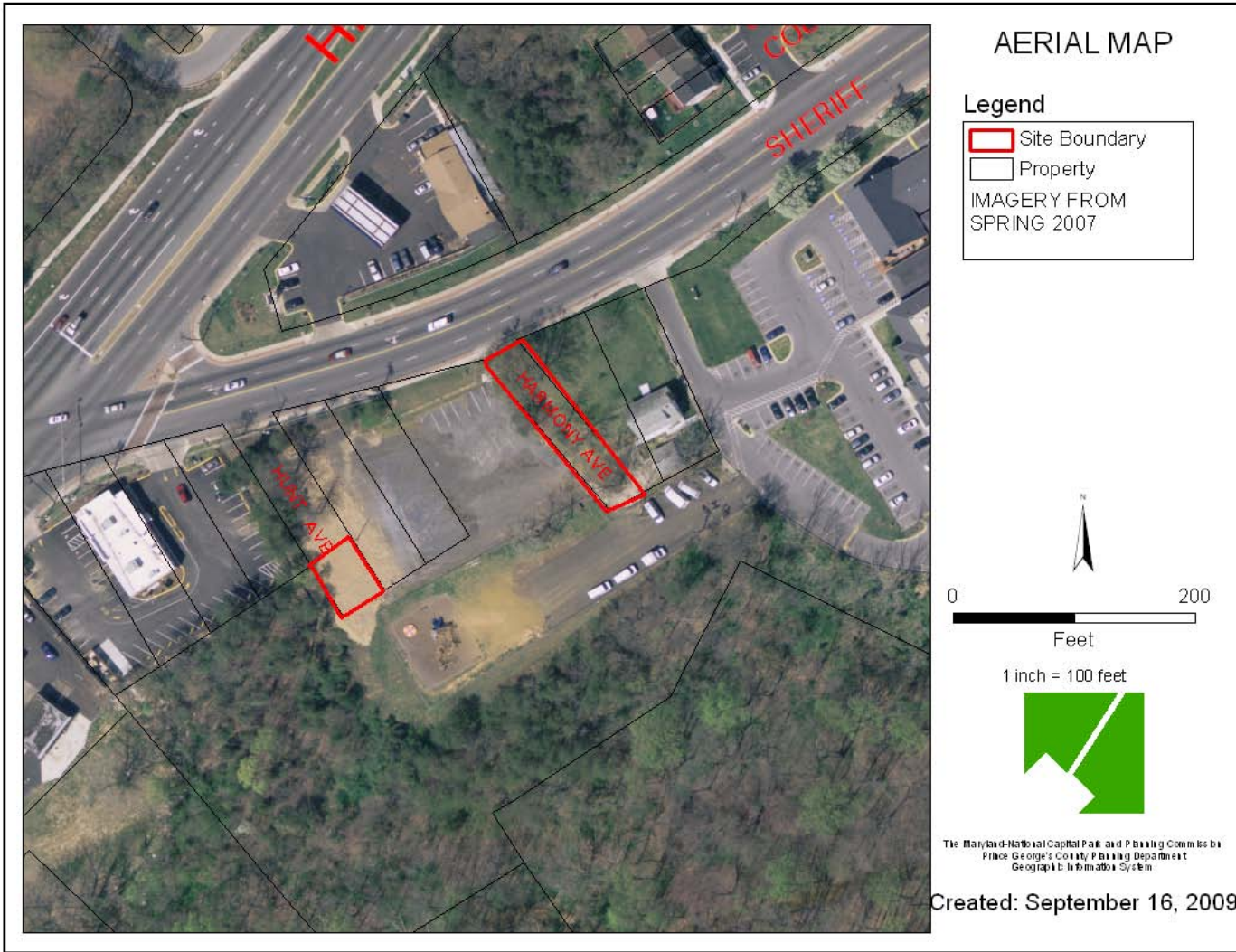
SITE VICINITY MAP



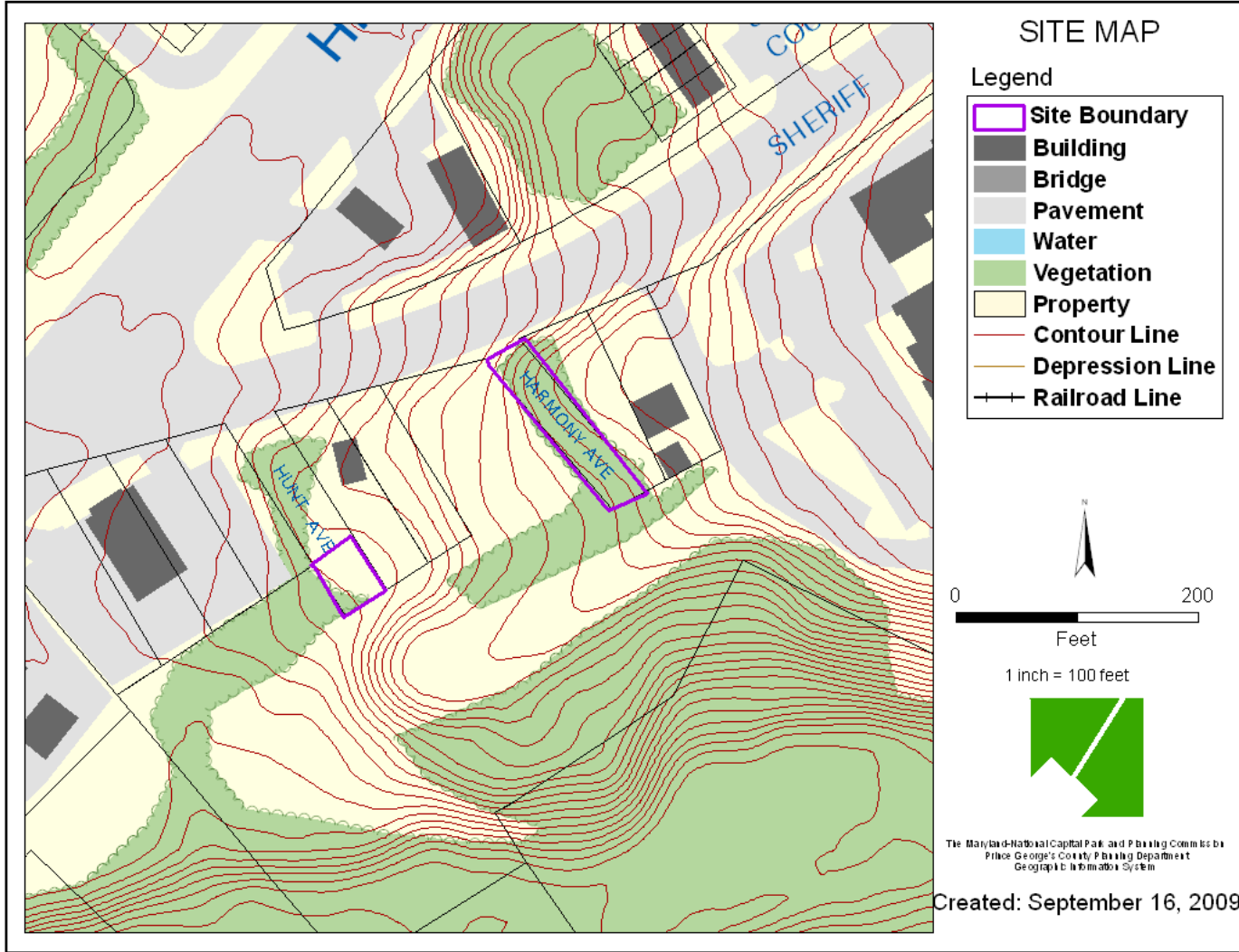
ZONING MAP



AERIAL PHOTO



SITE MAP

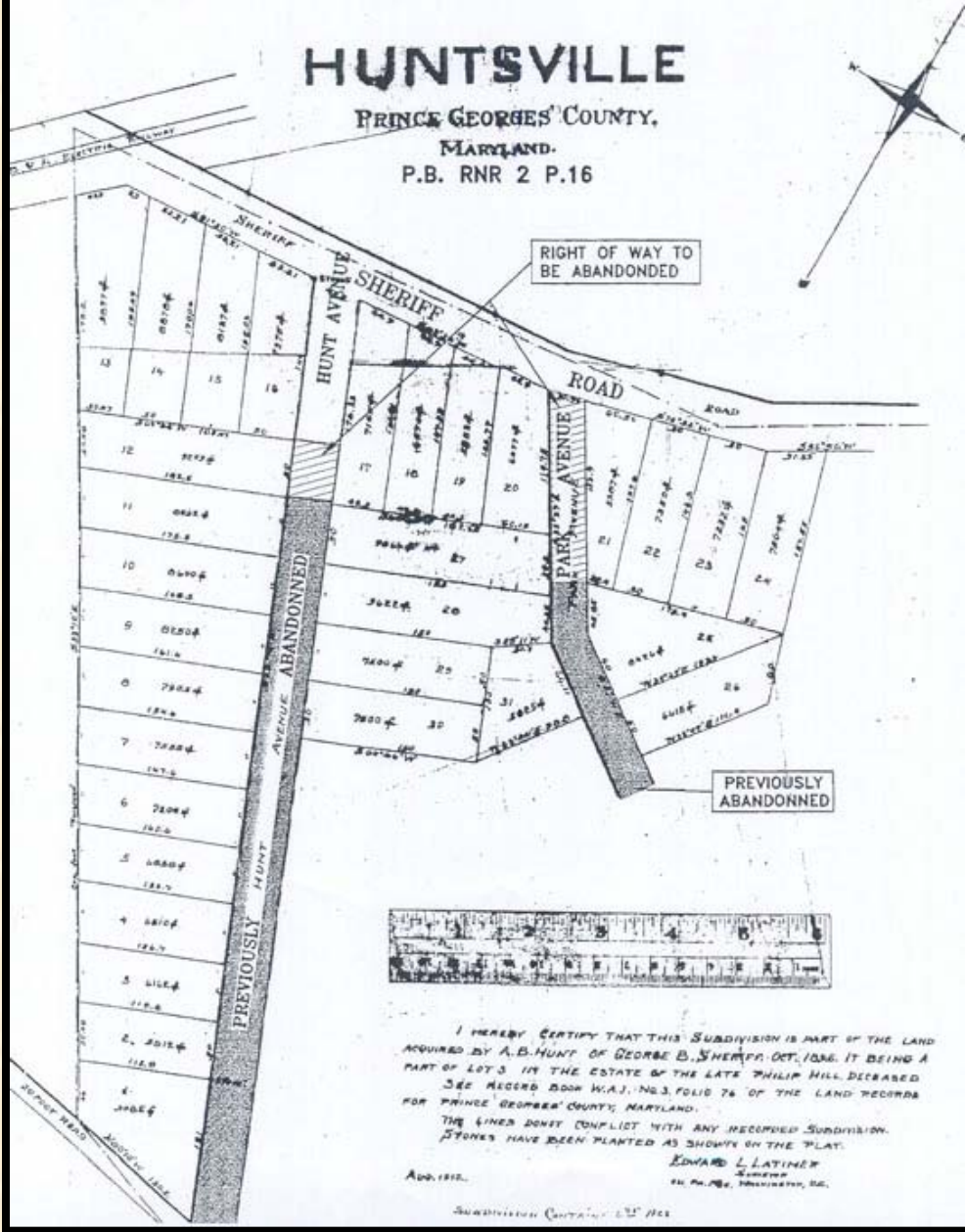


SUBDIVISION PLAT

EXHIBIT A

HUNTSVILLE

PRINCE GEORGES' COUNTY,
MARYLAND.
P.B. RNR 2 P.16



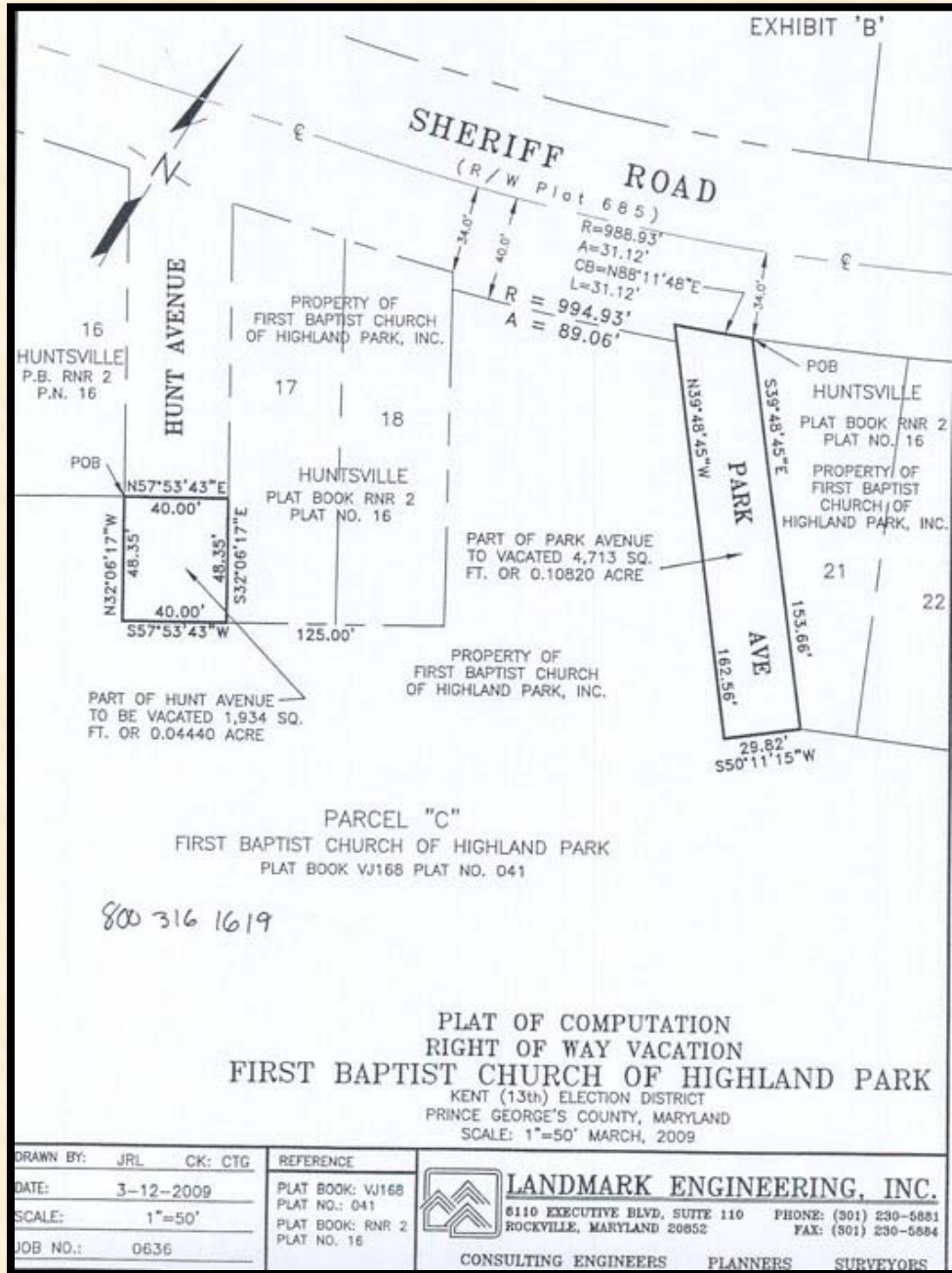
I HEREBY CERTIFY THAT THIS SUBDIVISION IS PART OF THE LAND ACQUIRED BY A.B. HUNT OF GEORGE B. SHERIFF OCT. 10, 1896, IT BEING A PART OF LOT 3 IN THE ESTATE OF THE LATE PHILIP HILL DECEASED SEE RECORD BOOK W.A.J. NO. 3, FOLIO 76 OF THE LAND RECORDS FOR PRINCE GEORGES COUNTY, MARYLAND.
THE LINES DON'T CONFLICT WITH ANY PREVIOUS SUBDIVISION. STONES HAVE BEEN PLANTED AS SHOWN ON THE PLAT.
EDWARD L. LATIMER
SURVEYOR
241 N. 7th St., WASHINGTON, D.C.
ADD. 1911.
SUBDIVISION CONTAINS 27 AC.

ITEM

V-09005



PLAT OF COMPUTATION



ITEM

V-09005



If you wish to speak
and/or become a
Party of Record, please
sign in at the front desk

Note: Please turn off all
cell phones