



UNIVERSITY *of* MARYLAND  
MEDICAL SYSTEM

# UMMS Vision

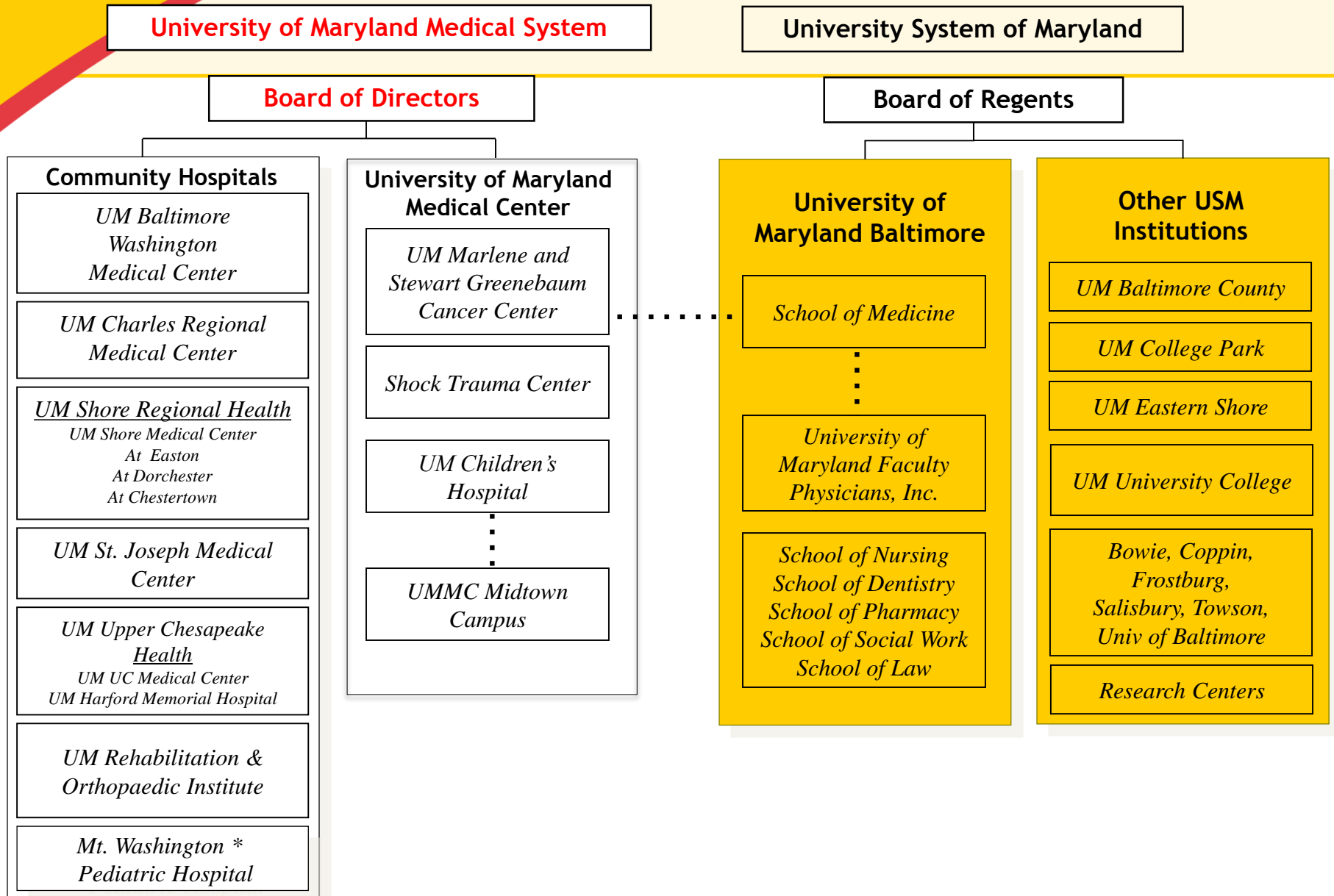
*UMMS, in partnership with the UM School of Medicine, will be the premier healthcare system serving Maryland and the region and a national model for the integrated delivery of healthcare*

*UMMS will be distinguished by:*

- *Our focus on the healthcare needs of Maryland and the region and providing access to world class care*
- *Patient centered care through highest quality and service excellence*
- *Innovative and cutting edge medicine supported by School of Medicine research and advanced technology*
- *The education of Maryland's future healthcare professionals*
- *All provided in an efficient and affordable manner*

*“We heal, we teach, we discover, we care...”*

# UMMS Organizational Structure



\* 50/50 Joint Ownership with Johns Hopkins

# UMMS Corporate Structure: 12 Hospitals, Employed Providers, Health Plans

HOSPITALS
<b>Academic Medical Center</b>
University of Maryland Medical Center
<b>Nine Community Hospitals</b>
University of Maryland Medical Center Midtown Campus
University of Maryland Baltimore Washington Medical Center
University of Maryland Shore Medical Center at Easton
University of Maryland Shore Medical Center at Dorchester
University of Maryland Shore Medical Center at Chestertown
University of Maryland Charles Regional Medical Center
University of Maryland St. Joseph Medical Center
University of Maryland Upper Chesapeake Medical Center
University of Maryland Harford Memorial Hospital
<b>Two Specialty Hospitals</b>
University of Maryland Rehabilitation and Orthopaedic Institute
Mt. Washington Pediatric Hospital*

EMPLOYED PROVIDERS
<b>University of Maryland Community Medical Group</b>
<ul style="list-style-type: none"> <li>• 550 Physicians</li> <li>• 250 Advanced Practiced Providers</li> </ul>

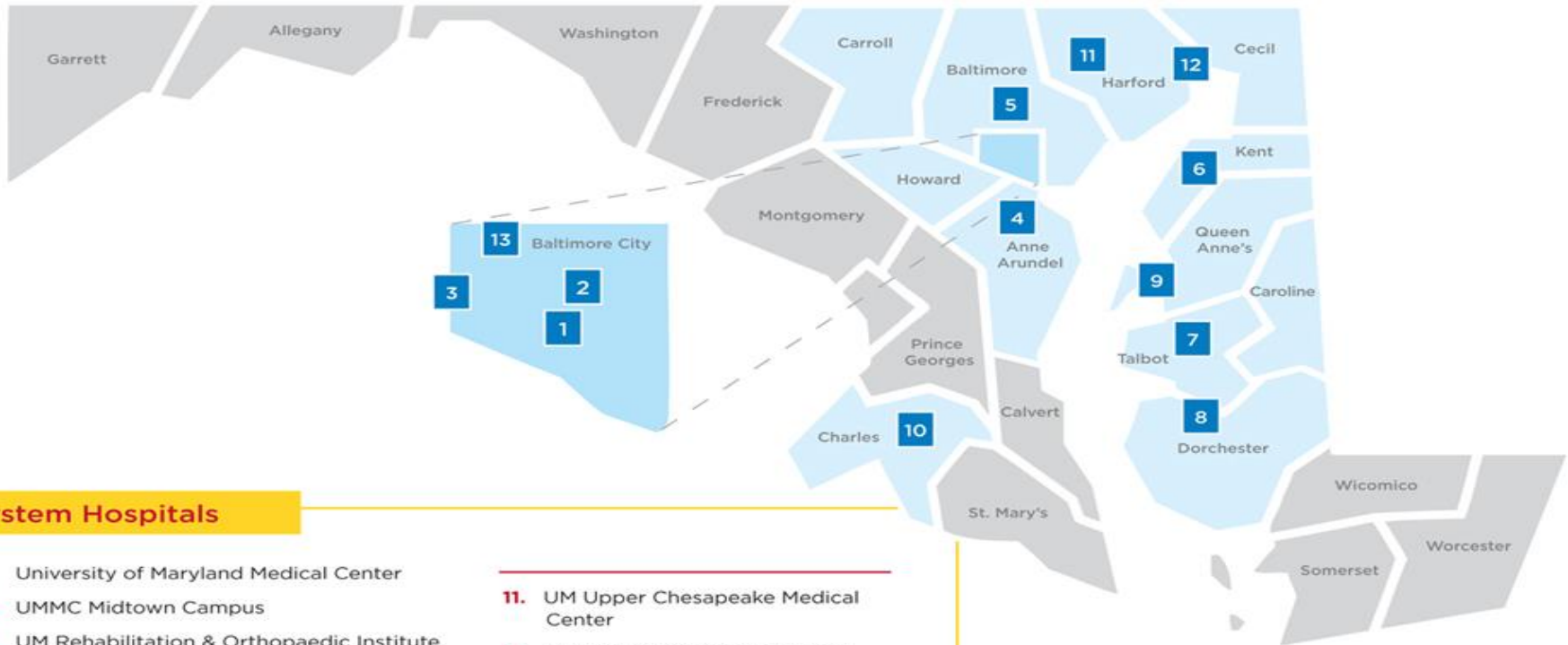
HEALTH PLANS**
University of Maryland Health Advantage (Medicare HMO)
Riverside Health (Medicaid MCO)

\*\*Acquisition of Riverside Health in August 2015

\* - 50/50 Venture with Johns Hopkins Medicine

# UMMS' Geographic Reach

Successful regional health systems pursue geographic reach, market share growth and scale sufficient to be indispensable to patients and purchasers.

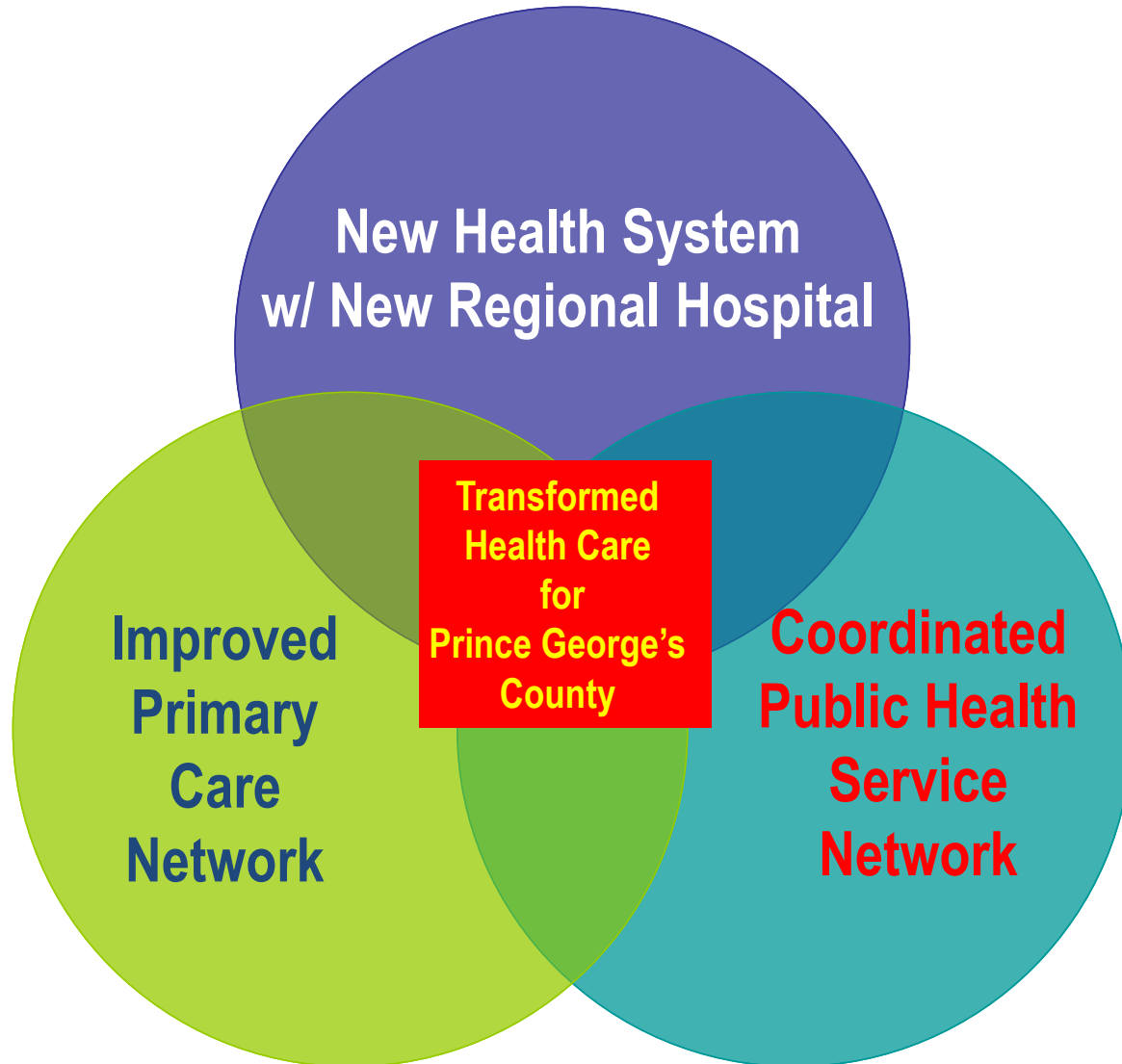


## System Hospitals

1. University of Maryland Medical Center
2. UMMC Midtown Campus
3. UM Rehabilitation & Orthopaedic Institute
4. UM Baltimore Washington Medical Center
5. UM St. Joseph Medical Center
6. UM Shore Medical Center at Chestertown
7. UM Shore Medical Center at Easton
8. UM Shore Medical Center at Dorchester
9. UM Shore Emergency Center at Queenstown
10. UM Charles Regional Medical Center
11. UM Upper Chesapeake Medical Center
12. UM Harford Memorial Hospital
13. Mt. Washington Pediatric Hospital (Joint Venture)

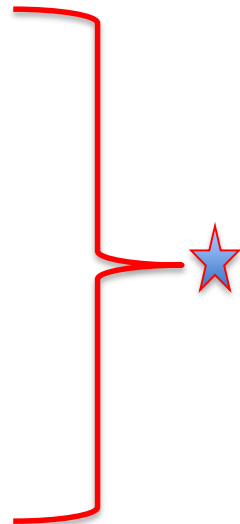
 UMMS Primary Service Area

*The New Care Delivery Model For Prince George's  
County Healthcare Based On School of  
Public Health Study & Emerging Healthcare Reform*



# *Anticipated Prince George's Project “Events”*

- Maryland Health Care Commission (MHCC) Action on Regional Medical Center (RMC) Certificate of Need October 20, 2016
- Initiate in depth transaction (due diligence) and transition planning/execution November, 2016
- File Hart/Scott Rodino (anti-trust) January, 2017
- Complete Definitive Agreement January, 2017
- Complete Transaction Requirements/Due Diligence May/June, 2017
- Closing June/July, 2017
- Transition Planning/Execution December, 2017
- Ceremonial Ground Breaking Fall, 2017
- RMC Completion Winter, 2020



# *Organizing for Phase III: Launching a New Prince George's Regional Medical System*





## *Dimensions/UMMS/UMB Collaboration on Clinical Programs to Date:*

- Trauma Care
- Critical Care
- Emergency Medicine
- Orthopaedics
- Cardiac Surgery/Cardiac Services
- Cardiac Anesthesiology
- Vascular Surgery