

ROUTE 1

LAND REDEVELOPMENT STUDY



THE MARYLAND-NATIONAL CAPITAL PARK AND PLANNING COMMISSION
Prince George's County Planning Department

VISION

1. Provide guidance for high quality mixed-use development.
2. Provide pedestrian-friendly, safe, and enjoyable places to walk
3. Develop design standards to maintain character of the area

GOALS

Establish dialogue and collaboration between the County, property owners and, residents preparation for long-term redevelopment.

For additional information, please review our website:

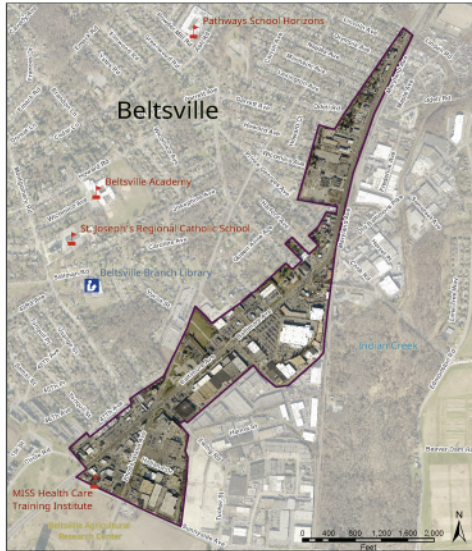
<https://pgplan.org/Rte1LRStudy>



Versión en español disponible

Encourage coordinated relationships with commercial, and industrial land users with surrounding neighborhoods.

Evaluate incentives for property owners, businesses, and start-ups for expansions and equipment purchases to create job growth and maximize the tax base.



**U.S. Route 1 Land Redevelopment Study
2021 Imagery**

© 2022 M-NCPPC. All Rights Reserved.

JOB: M064

**Questions or comments?
Please don't hesitate to contact us:**

Vanessa Akins
Special Program Coordinator
vanessa.akins@ppd.mncppc.org

Heather Asamoah
Intern II, Community Planning Division
heather.asamoah@ppd.mncppc.org

Garrett Dickerson
Planner I
garrett.dickerson@ppd.mncppc.org

Special thanks to:
Council Member
Tom Dernoga
County Council District 1



pgcouncil.us/District1
301-958-3887
councildistrict1@co.pg.md.us