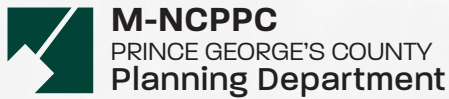


# M-NCPPC

## ENVIRONMENTAL PLANNING SECTION REVIEW AREAS



### PLANNERS

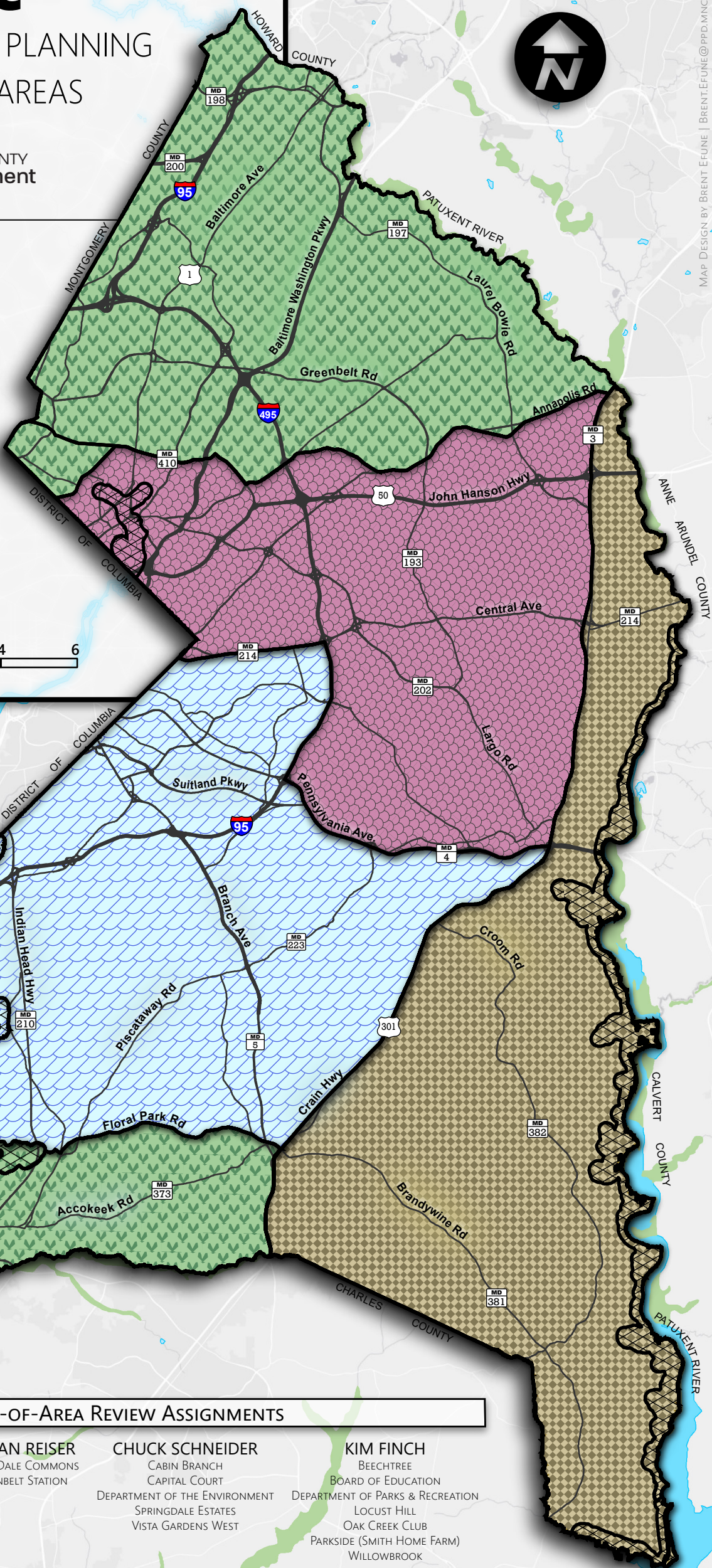
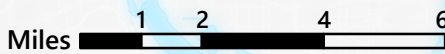
**MARC JUBA**  
(301) 883-3239

**MEGAN REISER**  
(301) 952-3752

**CHUCK SCHNEIDER**  
(301) 883-3240

**KIM FINCH**  
(301) 952-3506

### Chesapeake Bay Critical Area Overlay



### OUT-OF-AREA REVIEW ASSIGNMENTS

**MARC JUBA**  
BOARD OF EDUCATION  
DEPARTMENT OF THE ENVIRONMENT

**MEGAN REISER**  
GLENN DALE COMMONS  
GREENBELT STATION

**CHUCK SCHNEIDER**  
CABIN BRANCH  
CAPITAL COURT  
DEPARTMENT OF THE ENVIRONMENT  
SPRINGDALE ESTATES  
VISTA GARDENS WEST

**KIM FINCH**  
BEECHTREE  
BOARD OF EDUCATION  
DEPARTMENT OF PARKS & RECREATION  
LOCUST HILL  
OAK CREEK CLUB  
PARKSIDE (SMITH HOME FARM)  
WILLOWBROOK