

## Senior Population

This brief report examines key general and socioeconomic characteristics of the population aged 65 and over (senior population) in Prince George's County. The analysis highlights the characteristics of this demographic segment and provides insights for program planning and policy making at all levels of government. Data analysis in this Data Journal will help the County provide health, safety, welfare, and services for them.



*Disclaimer: For general population and housing characteristics, the data from Decennial Censuses 2000, 2010, and 2020 are used in this Planning Data Journal. For socioeconomic data, this Journal continues to use Census 2000 Summary File 3 and American Community Survey (ACS) data for 2010 and 2023. The reason for using decennial census data for general characteristics is that ACS data are estimates from an exceedingly small sample size (2.6% nationwide). For methodologies of the U.S. Census Bureau's programs, visit [www.census.gov](http://www.census.gov)*

### ABOUT THE DATA JOURNAL

The Prince George's County Planning Department's Research Section semi-annually publishes the Planning Data Journal series on significant demographic, housing, socioeconomic, nonresidential, land use, or other planning data. The Journal series will provide officials, county agencies, and the general public with a snapshot of up-to-date information that is fundamental for policy making and program planning for sustainable development through the equity lens.

# Senior Population

## General Characteristics

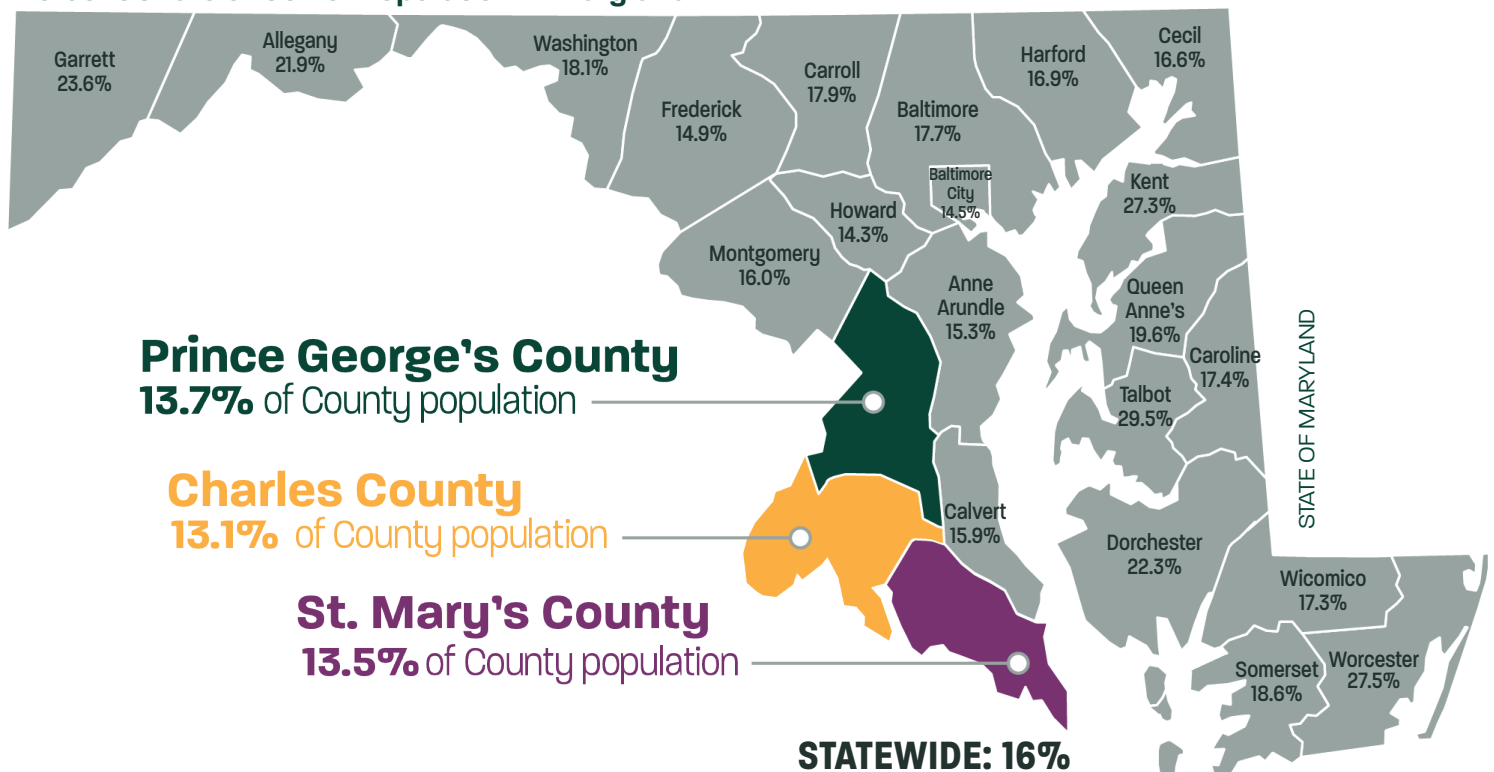
Prince George's County has 132,049 residents who are aged 65 or older, making up 13.7% of the County's total population of 967,201 (**Table 1**), according to Census 2020. The percentage share of the senior population increased from 7.7% in 2000 to 9.4% in 2010 and then to 13.7% in 2020. Among the senior population, the largest group is those aged 65 to 74. (**Table 1**).

**Table 1** further shows that the County's senior population has grown rapidly in the past two decades. The fastest growing segment was the 65 to 74 years old and over age group, followed by the 85 years old and over age group. From 2000 to 2020, the County's senior population increased by 113.6% to 70,234. Albeit a fast growth, they represent 13.7% of the County's total population, which is one of the three smallest proportions among all 24 jurisdictions in Maryland. That is higher than Charles County (13.1%) and St. Mary's County (13.5%), according to Census 2020. Statewide, 16% of its total population is 65 years old and over in Census 2020.

The senior population mostly resides outside I-495, also known as the Capital Beltway (see **Map**). Within the Capital Beltway, significant concentrations of the senior population live near Hillcrest Heights on both sides of MD 5, along MD 214, and north of MD 4.



### Percent Share of Senior Population in Maryland



**Table 1.** Total Population 65 Years Old and Over

Data Category	2000		2010		2020	
	Number	% Share	Number	% Share	Number	% Share
<b>Total county population</b>	<b>801,515</b>	<b>-</b>	<b>863,420</b>	<b>-</b>	<b>967,201</b>	<b>-</b>
Total 65 Years Old and Over	61,815	7.7%	81,513	9.4%	132,049	13.7%
65 to 74 years	36,720	59.4%	50,100	61.5%	82,324	62.3%
75 to 84 years	19,343	31.3%	23,125	28.4%	36,982	28.0%
85 years and over	5,752	9.3%	8,288	10.2%	12,743	9.7%

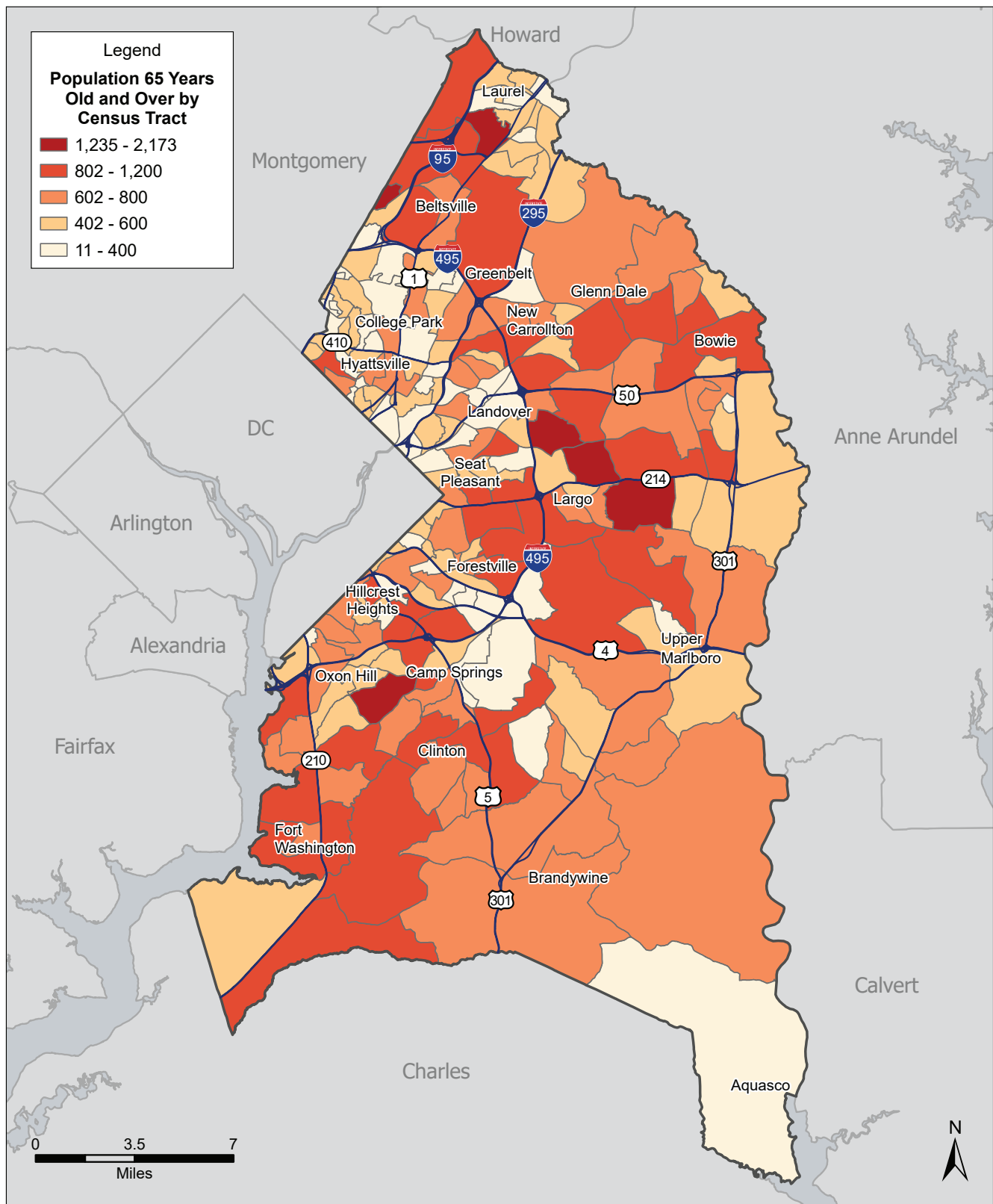
For specific age groups, % share is of the total 65 years and over.

Population Changes

Data Category	2000-2010		2010-2020		2000-2020	
	Absolute Change	% Change	Absolute Change	% Change	Absolute Change	% Change
<b>Total county population</b>	<b>61,905</b>	<b>7.7%</b>	<b>103,781</b>	<b>12.0%</b>	<b>165,686</b>	<b>20.7%</b>
Total 65 Years Old and Over	19,698	31.9%	50,536	62.0%	70,234	113.6%
65 to 74 years	13,380	36.4%	32,224	64.3%	45,604	124.2%
75 to 84 years	3,782	19.6%	13,857	59.9%	17,639	91.2%
85 years and over	2,536	44.1%	4,455	53.8%	6,991	121.5%

Source: U.S. Census Bureau, Decennial Census: 2000, 2010, 2020

# Senior Population



## Population 65 Years Old and Over Prince George's County

© M-NCPPC

Prince George's County  
 Planning Department  
 Data Source:  
 US Census Bureau  
 Census 2020  
 Map Updated: 1/10/2025  
 W. Lescure, Job #4468

# Household Types

**Table 2** and **Chart 1** illustrate the growth in the number of households with a householder<sup>1</sup> aged 65 and over between 2000 and 2020. Although the number of married-couple families within this age group also increased, their proportion of total households declined from 42.2% in 2000 to 35.5% in 2020. Conversely, the number of other families where the householder is male or female with no spouse present has increased over the same period. In addition, nonfamily households with a householder aged 65 and over have increased in both number and percentage share. Among these nonfamily households, more than 90% of householders live alone, although their percentage share slightly declined over the two decades.

Data in **Table 2** illustrate compelling evidence that the number of households with householders 65 years old and over has increased by 42,203 between 2000 and 2020. The data will be helpful for providing policy implications of potential demand for senior housing throughout the County.

<sup>1</sup> "The householder refers to the person (or one of the people) in whose name the housing unit is owned or rented (maintained) or, if there is no such person, any adult member, excluding roomers, boarders, or paid employees." U.S. Census Bureau, "Householder," Current Population Survey Subject Definitions, <https://www.census.gov/programs-surveys/cps/technical-documentation/subject-definitions.html#householder>.

**Table 2.** Household Type by Age of Householder

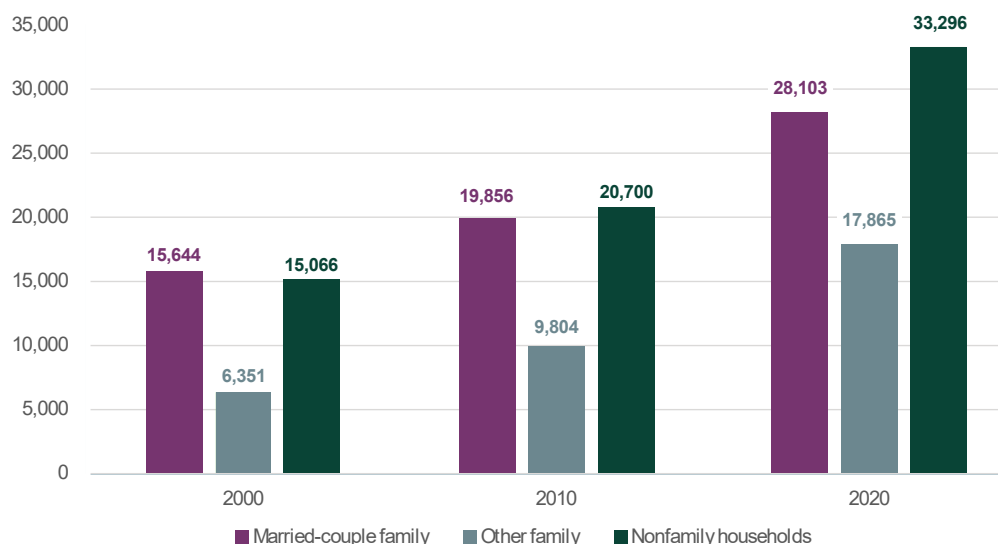
Data Category	2000		2010		2020	
	Number	% Share	Number	% Share	Number	% Share
<b>Total county households</b>	<b>286,610</b>	<b>-</b>	<b>304,042</b>	<b>-</b>	<b>342,216</b>	<b>-</b>
Total 65 Years Old and Over	37,061	12.9%	50,360	16.6%	79,264	23.2%
Married-couple family*	15,644	42.2%	19,856	39.4%	28,103	35.5%
Other family*	6,351	17.1%	9,804	19.5%	17,865	22.5%
Nonfamily households*	15,066	40.7%	20,700	41.1%	33,296	42.0%
Living alone**	14,101	93.6%	19,142	92.5%	30,513	91.6%

\*: % of Householder 65 years and over.

\*\* : % Nonfamily households.

Source: U.S. Census Bureau, Decennial Census: 2000, 2010, 2020

**Chart 1.** Household Types of Householder 65 Years Old and Over





# Senior Population

## Race and Ethnicity

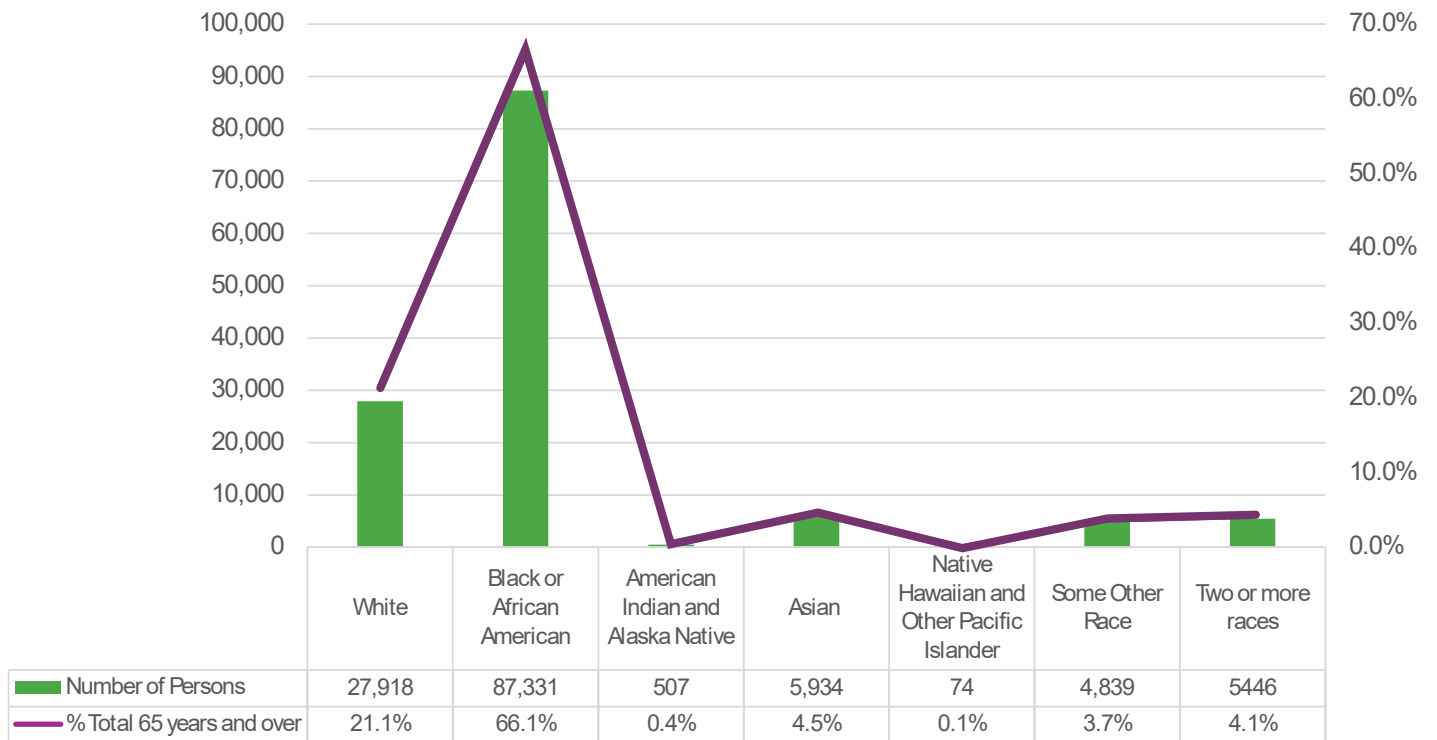
In Prince George's County, senior population reflects the County's demographics, with a significant majority being Black or African American (**Chart 2**). The Black or African American racial group comprises 66.1% of the County's total senior population of 132,049 (**Table 1**), which is higher than the County's overall population percentage of black or African American (61%). The White population accounted for 21.1% of this age group, compared to 12.9% of the proportion of the White population of the County's total population.

Furthermore, there are 7,785 people in this age group who are of Hispanic or Latino origin, making up 5.9% of the County population aged 65 and over. At the County level, Hispanic or Latino individuals make up 21.2% of the County's total population. It is important to note that people of Hispanic or Latino origin can be of any race.<sup>1</sup>

<sup>1</sup> U.S. Census Bureau, "Hispanic or Latino Origin," Census.gov, <https://www.census.gov/topics/population/hispanic-origin.html>.



**Chart 2.** Population 65 Years Old and Over by Race



Source: U.S. Census Bureau, Census 2020.



# Senior Population

## Education and Income

The educational attainment of the County's senior population has improved over time (**Table 3**). By 2023, the percentage of the population 65 years and over with a high school diploma or equivalent (87.3%) slightly exceeded the County level of 86.7%. The educational attainment for bachelor's or higher of senior population has reached 32.3% by 2023, which was a significant increase from 2000 (18.9%), though still 4 percentage points behind the County's level. Data on educational attainment for those aged 25 and over serves as a key indicator of an area's overall academic achievement.

The median household income for households with a householder aged 65 and over is lower than the County's overall median (**Table 4**). However, over time, the median household income for this age group has increased at a faster rate compared to the countywide median household income. It is important to note that the income data are adjusted by the U.S. Bureau of Labor Statistics' Consumer Price Index for All Urban Consumers for U.S. city average.

**87.3%**  
Obtained a  
**High School Diploma**  
(as of 2023)



**32.3%**  
Obtained a  
**Bachelor's or Higher Degree**  
(as of 2023)





**Table 3.** Educational Attainment

Data Category	2000		2010		2023	
	Number	% Share	Number	% Share	Number	% Share
<b>Population 25 years and over</b>	<b>503,698</b>	<b>-</b>	<b>547,564</b>	<b>-</b>	<b>656,475</b>	<b>-</b>
High school graduate or higher	427,557	84.9%	469,771	85.8%	569,417	86.7%
Bachelor's degree or higher	136,788	27.2%	162,176	29.6%	236,848	36.1%
<b>Total 65 Years Old and Over</b>	<b>61,815</b>	<b>12.3%</b>	<b>76,387</b>	<b>14.0%</b>	<b>138,054</b>	<b>21.0%</b>
High school graduate or higher	42,983	69.5%	59,260	77.6%	120,509	87.3%
Bachelor's degree or higher	11,687	18.9%	17,592	23.0%	44,611	32.3%

Source: U.S. Census Bureau, Census 2000; 2010 & 2023 American Community Surveys, 5-Year Estimates.

**Table 4.** Median Household Income

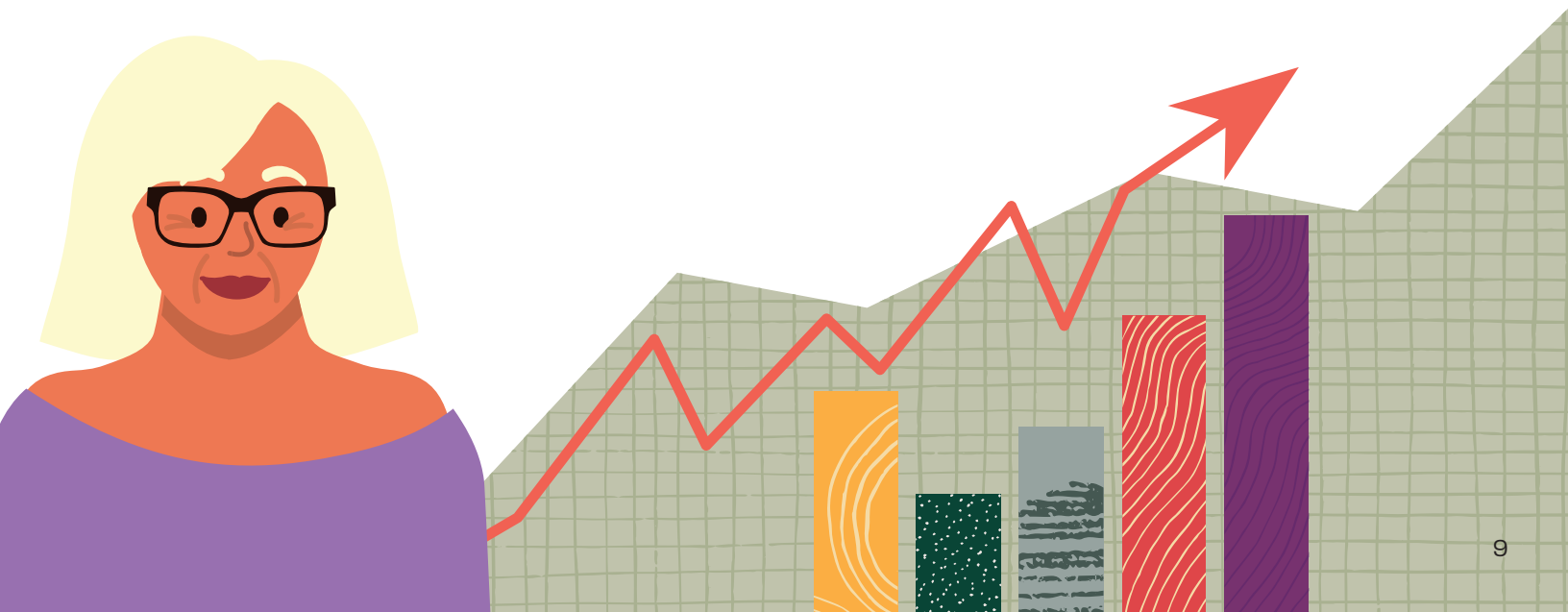
Data Category	2000		2010		2023	
	Income Change	% Share	Income Change	% Share	Income Change	% Share
All county households	97,773	-	99,575	-	100,708	-
Total 65 Years Old and Over	72,521	74.2%	73,061	73.4%	76,800	76.3%
Difference between all and 65 years and over	25,253	-	26,515	-	23,908	-

Changes	2000		2010		2023	
	Income (\$)	% Change	Income (\$)	% Change	Income (\$)	% Change
All county households	1,802	1.8%	1,133	1.1%	2,935	3.0%
Total 65 Years Old and Over	540	0.7%	3,739	5.1%	4,279	5.9%

Sources:

1. U.S. Census Bureau, Census 2000; 2010 & 2023 American Community Surveys, 5-Year Estimates.
2. U.S. Department of Labor Statistics, Consumer Price Index for All Urban Consumers (CPI-U): U.S. city average.

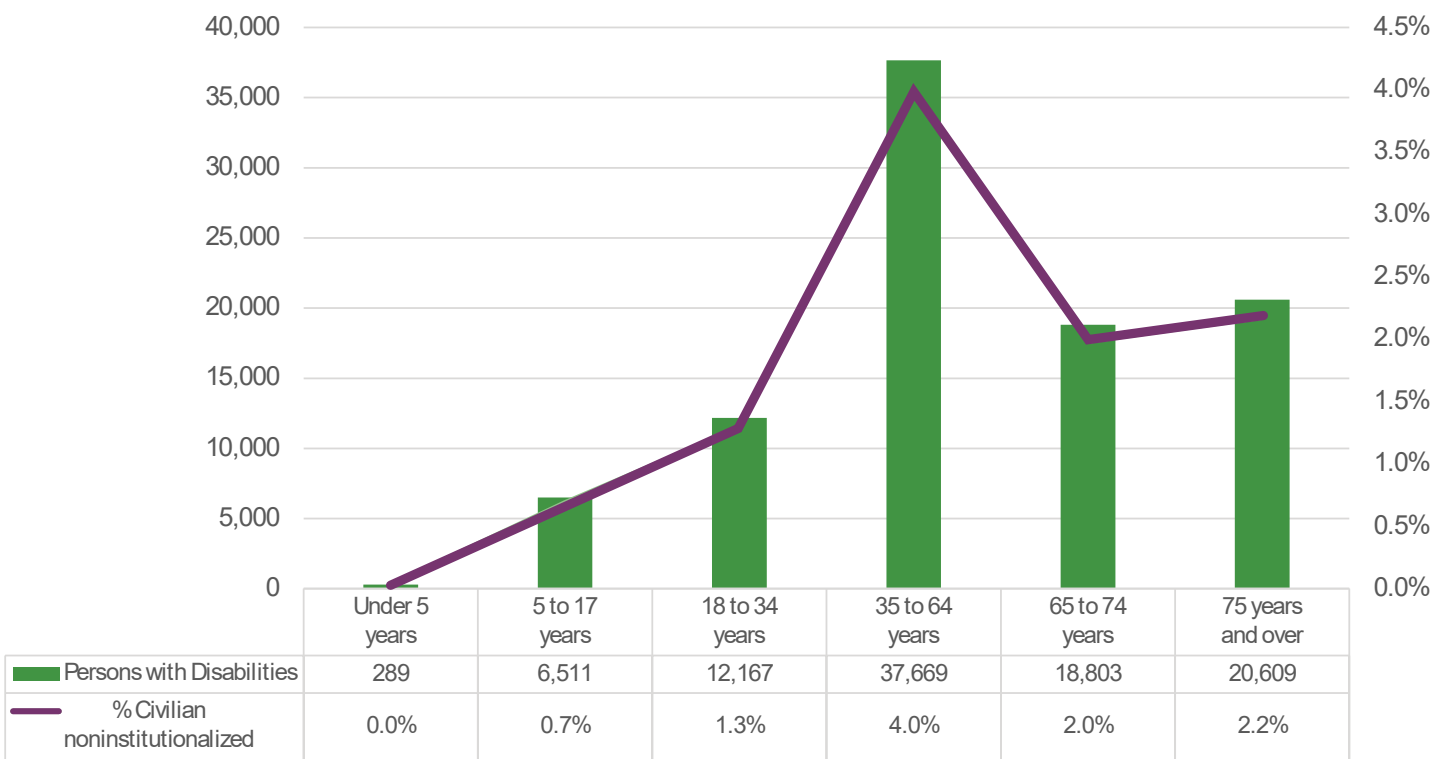


# Senior Population

## Disability Status

In Prince George’s County, the civilian noninstitutionalized population totals 946,621. Among them, 10.1% (96,048) are individuals with a disability. The largest percentage of these individuals is aged 35 to 64 (**Chart 3**). The number of individuals with a disability aged 65 to 74 is 18,803, representing 2.0% of the total civilian noninstitutionalized population. The number of population 75 years old and over with a disability is 20,609, accounting for 2.2% of the total civilian noninstitutionalized population. Overall, there are 39,412 individuals aged 65 and over with a disability, making up 4.2% of the total civilian noninstitutionalized population and 41% of the population with a disability.

**Chart 3.** Disability Status among Civilian Noninstitutionalized Population, 2023



U.S. Census Bureau, 2023 American Community Surveys, 5-Year Estimates.

# Group Quarters Population

**Table 5** indicates that in the County, 4,028 individuals aged 65 and over reside in group quarters.<sup>1</sup> Among them, 66.4% are institutionalized because of their disability status, primarily in nursing facilities or skilled-nursing facilities. The remaining group quarters population aged 65 and over lives in noninstitutional facilities, such as group homes and transitional shelters for people experiencing homelessness.

<sup>1</sup> "Group quarters include such places as college residence halls, residential treatment centers, skilled nursing facilities, group homes, military barracks, correctional facilities, and workers' dormitories," U.S. Census Bureau, "Group Quarters Population," *Census Glossary*, <https://www.census.gov/glossary/?term=Group+Quarters+%28GQ%29>.

**Table 5.** Group Quarters Population

Data Category	County		65 Years Old and Over	
	Number	% Share	Number	% Share
<b>Total:</b>	<b>19,683</b>	<b>-</b>	<b>4,028</b>	<b>-</b>
Institutionalized population	4,273	21.7%	2,676	66.4%
Correctional facilities for adults	681	15.9%	4	0.1%
Juvenile facilities	100	2.3%	0	0.0%
Nursing facilities/Skilled-nursing facilities	3,384	79.2%	2,642	98.7%
Other institutional facilities	108	2.5%	30	1.1%
Noninstitutionalized population	15,410	78.3%	1,352	33.6%
College/University student housing	12,228	79.4%	0	0.0%
Military quarters	295	1.9%	0	0.0%
Other noninstitutional facilities	2,887	18.7%	1,352	100.0%

The percentage under Institutionalized or Noninstitutionalized is the % of total institutionalized or noninstitutionalized.  
Source: U.S. Census Bureau, Census 2020.

# Senior Population

## Vehicle Availability

**Table 6** indicates that the number of households with a householder aged 65 and over who have no vehicles available has fluctuated over time. Their percentage share of all County households without vehicles increased marginally. In addition, the number of households with a householder aged 65 and over who have one or more vehicles available has risen, as has their percentage share of the County’s households with one or more vehicles. This trend is due to the faster growth rate of households with a householder aged 65 and over compared to the overall County households.

**Table 6.** Vehicle Availability

Data Category	2000		2010		2023	
	Number	% Share	Number	% Share	Number	% Share
Total households	286,610	-	301,906	-	344,586	-
No vehicle available:	30,013	10.5%	27,999	9.3%	31,683	9.2%
Householder 65 years old and over*	6,147	20.5%	5,951	21.3%	10,328	32.6%
1 or more vehicles available:	256,597	89.5%	273,907	90.7%	312,903	90.8%
Householder 65 years old and over**	32,447	12.6%	39,125	14.3%	73,486	23.5%

Absolute and percent changes:

No vehicle available:	-2,014	-6.7%	3,684	13.2%	1,670	5.6%
Householder 65 years old and over*	-196	-3.2%	4,377	73.6%	4,181	68.0%
1 or more vehicles available:	17,310	6.7%	38,996	14.2%	56,306	21.9%
Householder 65 years old and over**	6,678	20.6%	34,361	87.8%	41,039	126.5%

Percent share of Householder 65 years old and over:

Householder 65 years old and over*	38,594	-	45,076	-	83,814	-
No vehicle available:	6,147	15.9%	5,951	13.2%	10,328	12.3%
1 or more vehicles available:	32,447	84.1%	39,125	86.8%	73,486	87.7%

\*: % countywide no vehicles available. \*\*: % 1 or more vehicles available.

Note: Total householder 65 years old and over in Table 6 does not equate to the numbers in Table 2, because the data in this table are from sample surveys by the U.S. Census Bureau. Table 2 data are from enumeration in a decennial census.

Source: U.S. Census Bureau, Census 2000; 2010 & 2023 American Community Surveys, 5-Year Estimates.



# Computer and Internet Use

The percentage of senior population who own a computer is high at 94.1%, slightly lower than the overall County population's 98.4% (**Table 7**). Among this age group, 94.1% have a broadband internet subscription, indicating a strong trend of connectivity within this demographic, though a small segment remains without it. The data may help the County initiate policies to improve access to technologies for those aged 65 and over so that they can have easy access to public services such as inoculations during an epidemic or pandemic.

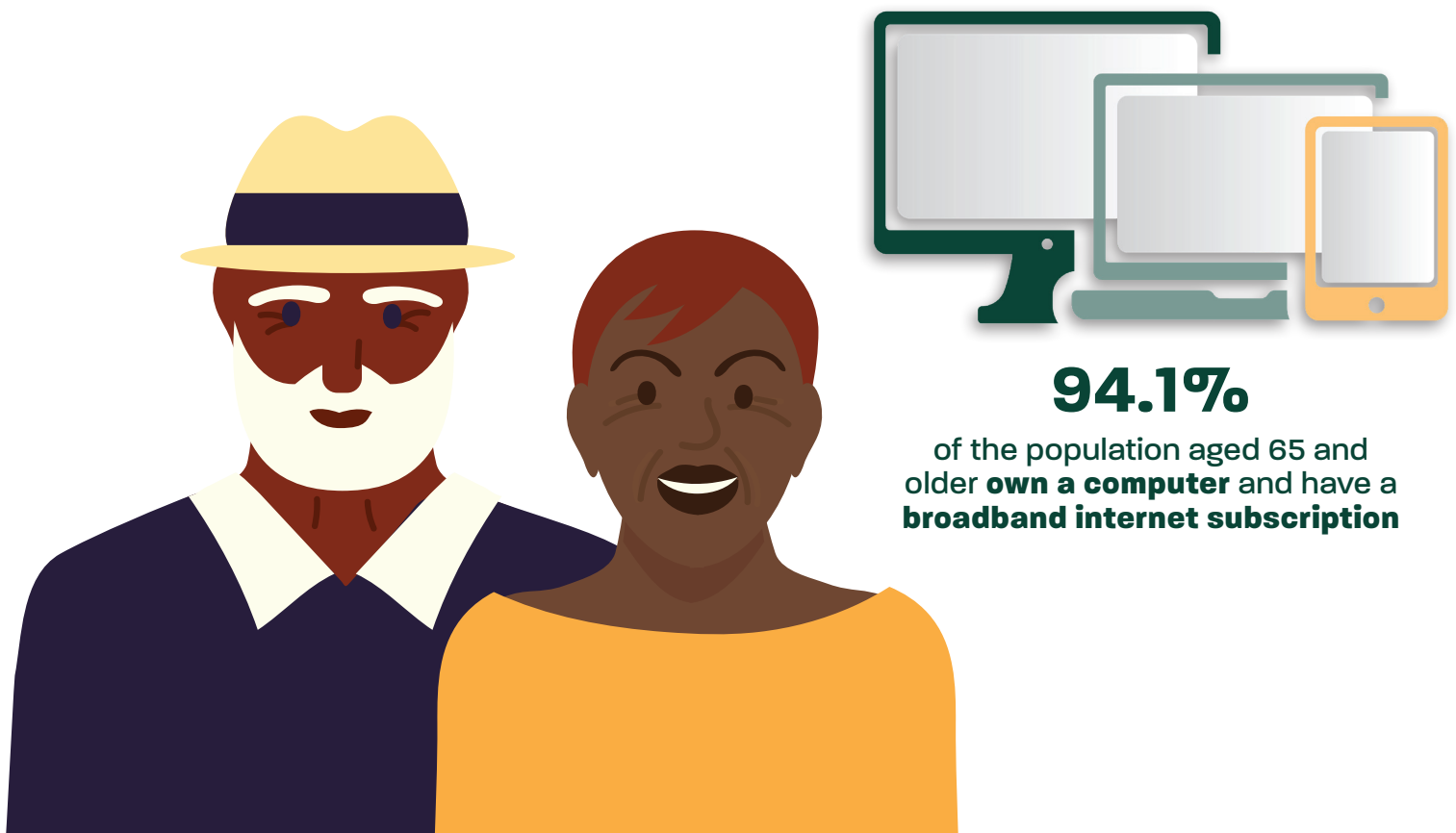
**Table 7.** Computers and Internet Use

Data Category	County		65 Years Old and Over	
	Number	% Share	Number	% Share
<b>Total population in households</b>	<b>936,961</b>	<b>-</b>	<b>134,808</b>	<b>-</b>
Has a computer:	921,534	98.4%	126,910	94.1%
With dial-up Internet subscription alone	762	0.1%	172	0.1%
With a broadband Internet subscription	881,471	95.7%	119,485	94.1%
Without an Internet subscription	39,301	4.3%	7,253	5.7%
No computer	15,427	1.6%	7,898	5.9%

The percentage in a sub-category under "Has a computer" is % share of "Has a computer".

Total population = population in households + group quarters population.

Source: U.S. Census Bureau, 2023 American Community Surveys, 5-Year Estimates.



# Senior Population

## Health Insurance Coverage

**Table 8** indicates that the proportion of senior population with health insurance coverage is significantly higher than the County’s overall coverage rate. Specifically, 98.2% of individuals in this age group are covered, compared to 88.8% of the general population. “Adults aged 65 and older are the least likely to be uninsured due to their near-universal Medicare coverage”, according to the U.S. Census Bureau.

**Table 8.** Health Insurance Coverage Status

Data Category	County		65 Years old and Over	
	Number	% Share	Number	% Share
Total civilian noninstitutionalized population	946,621	-	135,252	-
With health insurance coverage	840,477	88.8%	132,790	98.2%
No health insurance coverage	106,144	11.2%	2,462	1.8%

Source: U.S. Census Bureau, 2023 American Community Surveys, 5-Year Estimates.





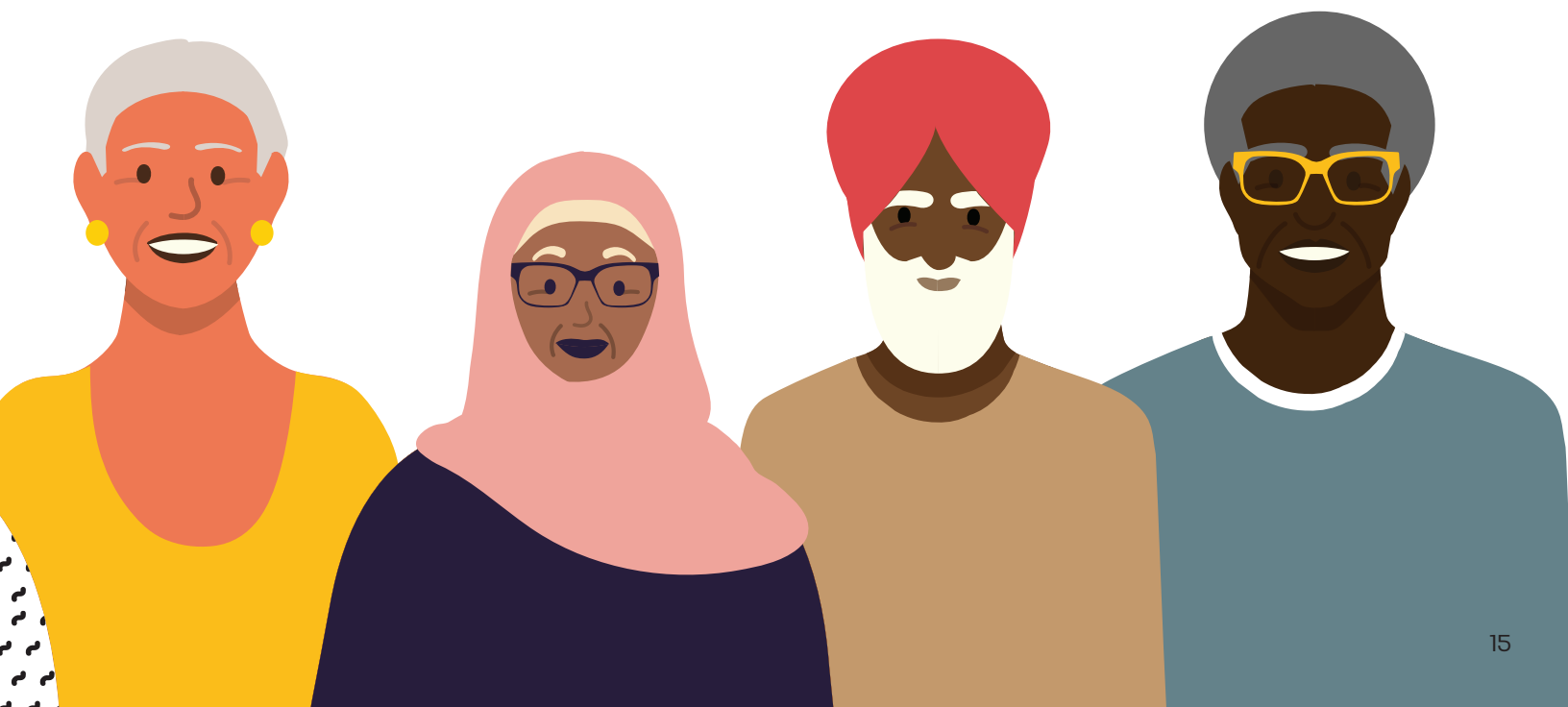
# Conclusion

In Prince George's County, senior population continues to grow, with its percentage share increasing noticeably. Reflecting the County's diversity, this age group is Black or African American. Other major indicators for senior population include an increasing level of educational achievement, a remarkable rate of insurance coverage, and high computer and internet access.

Some important demographic indicators include the number of people in this age group who live alone, have some form of disability, have low income, are institutionalized, or have an increase in vehicle ownership. These indicators are crucial for planners and policymakers to use in formulating legislation and public programs to support this demographic group. This ensures their health, safety, transportation, access to parks and recreation, and economic well-being as they navigate the challenges of aging in place.

## Additional Resources

The Aging and Disabilities Services Division of the Prince George's County government provides an extensive array of services for the senior population. The detailed information is available at <https://www.princegeorgescountymd.gov/departments-offices/family-services/aging-and-disabilities-services-division>



# Acknowledgments

## Prince George's County Planning Department

### SENIOR MANAGEMENT TEAM

Lakisha Hull, AICP, LEED AP BD+C, Planning Director

James Hunt, Deputy Director for Operations

Tony Felts, AICP, Deputy Director for Administration

Jim Cannistra, C.P., GISP, Chief of Information Management Division

### PRODUCTION TEAM

Kui Zhao, AICP, Planning Supervisor

Emma Walker, Research Planner II

William Lescure, GISP, Senior GIS Specialist

Charles Wade, Demographic Planner II

### PUBLICATIONS TEAM

Tamu Wright, Editor

Corianne Setzer, Publications Specialist



1616 McCormick Drive  
Largo, MD 20774



### ABOUT THE DATA

The data on the county population and the Hispanic or Latino population enumerated from a decennial census differs from those collected in the American Community Survey (ACS), a U.S. Census Bureau program for gathering detailed socioeconomic data from communities nationwide with a small sample size of 2.7% (survey 3.5 million addresses out of 127 million yearly).

The Public Use Microdata Areas (PUMA) as exhibited on Maps 1 and 2 were delineated by the U.S. Census Bureau and Maryland State Data Center using Census 2020 for smaller census geographies than PUMAs.